

Effectively Pleasing

Prescribed for colds accompanied with headache or fever.

Laxative Phospho Quinine Capsules

will be found a most beneficial remedy. There is danger in neglecting a cold. You may escape a severe sickness if you take simple home treatments when first the symptoms of a cold are felt.

50 cents the bottle

HENRY H. FENN

The Rexall Store

CHELSEA, MICHIGAN

Beds, Springs, Mattresses

We carry a complete line of beds, springs and mattresses at the price you have been waiting for. An inspection of them will convince you.

Skis	\$1.50 per pair
Sleds	\$1.25 each
Skates	\$1.25 per pair
Plumb guaranteed axes	\$2.25
Bridge Lamps	One-fourth Off
Snow Shovels	95c each

LAMP BULBS

From 25 watt to 200 watt—at 20c to 85c each.

B P S PAINT

MOBILOIL

F. W. MERKEL

PHONE 91

Why you

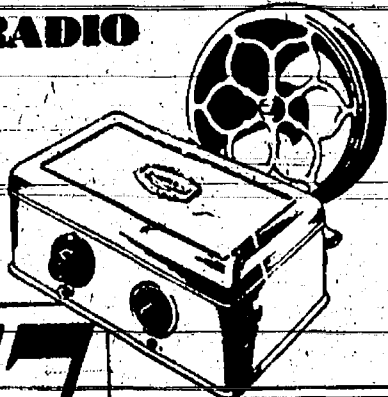
should select your

ATWATER KENT

RADIO

here...

Here, you can choose your Atwater Kent all-electric set and know that it is installed by experts, and that our own guarantee is behind it.



\$77 without tubes

Model 40 A. C. SET Uses 1 rectifying and 4 A. C. tubes. 777 (without tubes). Radio speaker—3 piece—each \$20.

E. J. CLAIRE & SONS

The New Idea Spreader

The use of a manure spreader is an established custom on all well operated farms. What spreader to buy is the only problem you have to decide. In making this decision, allow only well established facts to influence you.

The New Idea is the pioneer in spreader manufacture. Using the same basic principle throughout the long successful history of manufacture, using advanced methods of manufacture and adding improvements from time to time has kept New Idea at the head of the field and is the reason for their being so universally used.

The decision of over half the spreader users is the New Idea. Come in and we can easily show you the reason why they buy New Idea spreaders.

Do not be misled or influenced by some smooth sales talk—by some manufacturer who always claims the best but changes designs nearly every year. Look around you and be guided by the actual service your neighbors are enjoying through the use of the New Idea. You can save the cost of the canvassing salesman by calling on us for your implement requirements.

Hindelang Hardware Company

Quality Merchandise

Fair Prices

Friendly Service

W. C. SMITH ASSUMES COMBINATION OFFICE AT MICHIGAN CENTRAL

Other Changes Effectuated at Chelsea Station Complying With New Policy of New York Central On Its M. C. Lines.

Last Friday, January 11, Wesley Smith, formerly freight agent at the Michigan Central, officially became operator at this station, retaining also the position of freight agent, A. Eastler, for the past eight months acting as operator—being transferred to the second track and W. Hart, former second track man taking the swing job between Grass Lake and Chelsea.

Installation of a handy commodious freight office, built in next to the operators' office in the depot makes possible the expediting of all railroad business with the least possible effort.

The new management was effected without undue confusion and seems to be fully appreciated by the shippers in this community.

John Walz Receives Broken Arm, Result Of Kick By Horse

John Walz, living one and a half miles northwest of Chelsea was brought to Chelsea Private Hospital last Saturday afternoon suffering with a compound fracture of an arm, bruised shoulder and lacerated face and head resulting from being kicked by a horse.

Mr. Walz was doing chores in the stable when he was kicked by one horse and when down another horse stepped on his hand. Injuries to his shoulder and head were made when he fell to the floor from being kicked. Up to the present time nothing serious has developed from his injuries, but no doubt it will be several days before he will attempt to leave the hospital for his home.

Petitions Circulated For Judge Sample

Petitions for placing the name of Judge George W. Sample on the ballot for the primary election which will be held March 4 are being circulated throughout the county. Judge Sample has served the twenty-second judicial circuit court in Ann Arbor for several years and has been assigned to preside in the courts of other circuits many times during this time. He is one of the ablest circuit judges in the courts of Michigan.

Chelsea Experiences Real Winter Weather

Old timers of the 80's and early 90's are busily talking about those days when it was quite the regular thing to plow through snow-banks, to parties, but mostly to bank the house up, get the huge woodpile handy and set by the glowing stove from November to March.

Weather as experienced in Chelsea for the past few days has been rare and far between in Michigan for some few years but the old days of sub-zero weather has nothing on 1929 as modern as it is supposed to be.

MRS. HENRY J. HEININGER Elizabeth Eckhardt was born November 13, 1854 at Hesse, Germany, and died at her home on Jefferson street, Chelsea, January 12, 1929.

She came to America in the year 1872. On December 25, 1883 she was united in marriage to Henry J. Heininger of Lima, and they resided at their farm home in Lima until six years ago, when they came to Chelsea. She leaves to mourn their loss, the husband, two sons, Harvey of Chelsea and Ezra of Lima, also one grandchild, Harriet. She had two brothers and a sister in Germany, who have preceded her in death, and among the several nephews who survive is John Schieffelin of Chelsea.

Mrs. Heininger will be greatly missed by her family and friends. She will be remembered as one of the kindest of mothers. Being a home loving woman she cared little for social activities but gave generously to any good cause.

Among her outstanding traits was sympathy, never failing to extend a helping hand to those in need. The unusual amount of floral offerings testified to the high esteem in which she was held.

The funeral was held at her home Tuesday, January 15, Rev. A. E. Potts officiating. Interment in Oak Grove cemetery.

CARD OF THANKS

We wish in this way to thank our friends and neighbors for their many acts of kindness during the illness and after the death of our loved one. Henry Heininger and family.

Herbert Hoover Will Be Extended Invitation To Visit Michigan

At a business meeting at the Fort Wayne Hotel, Detroit, last Thursday, of the Michigan District Kiwanis International, it was voted to extend an invitation to President-elect Herbert Hoover to come to Michigan this summer. The ceremony in which Mr. Hoover will be asked to take part will be the planting of 5,000 acres of national forest at East Tawas, which is the continuation of a project started by Michigan Kiwanis last summer.

The state of Michigan has not been honored by a visit from a chief executive since Theodore Roosevelt made a trip here during his administration and it is hoped by Kiwanians that Mr. Hoover will see fit to accept the invitation. The planting will probably take place in August.

Two hundred Kiwanis presidents, trustees and members of committees were present and plans were formulated for a constructive year in Michigan Kiwanism. It was voted to present charters to clubs with a membership of twenty-five, which will allow the Kiwanis to expand into communities which have heretofore been handicapped by the required membership of thirty-five.

Paul F. Niehaus, local songster, who has been chairman of the music committee of the Michigan District for the past year, was in attendance at the meeting in Detroit, and was again honored by being appointed to the chairmanship for another year.

GOLDEN BELL NOW OPENS

KIWANIS CLUB MEETINGS

Is Presented to Local Organization By 4-H Clubs in Chelsea Area as Mark of Appreciation.

Last Monday night when President F. E. Storms of the Chelsea Kiwanis Club called the regular meeting together the clear golden tones of a beautifully made bell was the means used in announcing that the meeting was called to order.

Presentation of the bell to the local Kiwanians was in appreciation of the interest shown in the 4-H clubs in the Chelsea area including Sylvan, Lyndon, Lima and the Industrial Three-in-One 4-H clubs. A. E. Hagen, county club agent, was also a contributor to the fund.

During 1927 and 1928 the local luncheon club has been sponsors to the 4-H clubs and have materially assisted in the many activities entered into by the seventy-five members of the agricultural clubs.

The bell is gold plated, stands 13 inches high and is eight inches across the bottom with the handle made in the shape of the Kiwanis emblem, enameled in blue and white, Kiwanis colors.

The following appears engraved on one side of the bell: Presented to Chelsea Kiwanis Club by Sylvan 4-H Club, Lyndon 4-H Club, Lima 4-H Club, Industrial Three-in-One 4-H Club.

The bell is valued at \$38.50 but was secured by the donors at the wholesale cost of \$27.55.

CARD OF THANKS

We wish to extend our thanks to the Chelsea firemen, neighbors and all others who so kindly assisted us at the time our home was damaged by fire two weeks ago this morning. Mr. and Mrs. J. E. McKune, Herbert McKune.

NEW FEATURE TO BE ADDED BY STANDARD

During the year a number of questions whose correct answer is in doubt are brought to this newspaper office for information as to the answer to the question. Beginning at once a special "Question and Answer" department will be made a feature of the Standard and all questions submitted will be published together with the answer to same.

Although initials only will be used in publishing, to insure good faith we insist on the full name being given in your request for an answer to your question.

All questions submitted except religious or political opinions and slanderous and slurring questions will be correctly answered in this department. Any and all readers of the Standard are invited and urged to submit questions as what it really means is an interesting weekly feature produced by this publication in cooperation with its many readers.

Mail questions to Question and Answer Department, Chelsea Standard, Chelsea, Mich.

CONSUMERS POWER PLAN RURAL EXTENSION LINES HERE

Will Start Construction Early in the Spring on 15-Mile Farmers Line to Manchester. Complete High Voltage Line.

Early spring promises to bring to Chelsea considerable construction activity. Besides the building of the village sewage system, the Consumers Power company are planning to start work on rural electric extension lines for the benefit of farms and rural homes in this community.

The rural extension department of the Consumers is now ready and fully equipped to care for this kind of rural development and have for some time been developing test lines in various parts of the state.

Past the experimental stage the idea has rapidly gained favor with rural communities and requests for service are numerous and many from all sections of the state.

Applications have been filed for at least three separate lines from this station and it is the intention of the Consumers Power Co. to start construction early this spring on a 15-mile line extending to Manchester with a possible "hookup" with 60 farm customers, each of which will have available current for both light and power, sufficient for all farm activity where power is needed.

The new 40,000-volt line between here and Jackson has now been completed, the final "cut over" being made Saturday of last week. The two necessary five-hour interruptions during the past two Saturdays were due to construction work on the new high voltage line and of course will not occur again.

High School Will Present Three-Act Comedy Tonight

"Aaron Slick From Pookin Creek," a rural comedy in three acts, will be presented this evening at the public school auditorium by an all-high cast from Chelsea high school. Following is the cast:

Aaron Slick, not as green as he looks—John Adair.

Mr. Wilbur Meridew, a crooked speculator—Howard Holmes.

Clarence Green, a mysterious young man—Andrew Epples.

Mrs. Rosy Berry, an Oklahoma widow—Margaret Heselschwerdt.

Gladys May Merithew, a sweet young thing—Jean Turnbull.

The Girl in Red, "Little Sis Riggs", a regular tomboy—Eunice Gulde.

Hotel Guests—Claude Rogers, Dudley Holmes, Mahlon Dunkel, Grace Luick, Loretta Rahmiller, Katherine Hindelang.

Specialties between acts by the Glee club, and Jack Weber and Austin Faust will be features of the program.

MRS. LOUISE K. HELLER

Mrs. Louis K. Heller, widow of the late John Heller, died Thursday evening, January 10, 1929, at the home of her daughter, Mrs. Lydia Zahn in Freedom township. She was born January 15, 1880, in Lima township, the daughter of Mr. and Mrs. John Kaercher, and was married January 15, 1884, to Mr. Heller who died two years ago. She resided on the Heller farm in Lima township for 48 years, going to Freedom township seven months ago to reside with her daughter.

She is survived by two daughters, Mrs. Earl R. Lowry of Ann Arbor, and Mrs. Zahn; a son, Rudolph, of Free, Mich.; and a brother, Michael Kaercher of Ann Arbor.

Funeral services were held at 1:30 Sunday afternoon at the residence and at 2:30 at St. Paul's church, Chelsea. Rev. P. H. Garbowiski of Chelsea, assisted by A. A. Schoen of Farmington, conducting the services. Interment was in Oak Grove cemetery.

AL SMITH BOBS UP AGAIN

Everybody had forgotten there was an election last fall until Al Smith plunged his party heavier in debt Wednesday night when the services of a national radio hook-up were employed in an appeal to loyal members of the democratic party to assist in making up the deficit of \$1,500,000, the hang-over of the "Happy Warrior's" recent campaign.

CARD OF THANKS

We desire in this way to thank our friends and neighbors for their acts of kindness and expressions of sympathy during our recent bereavement.

Mrs. Minerva Stoffer and family.



Place your order now for spring delivery of a new Ford car or truck and avoid possible delay when you want it. We can give good delivery now, almost immediate on some body types, but with a number of orders already received for spring delivery and with the usual spring demand there is certain to be a disappointing delay for those who wait too long before placing their order.

Palmer Motor Sales

ESTABLISHED IN 1911

Chelsea, Mich.

SPECIALS

Sugar, Domino, 25 lbs.	\$1.53
Sugar, H & E, 10 lbs.	.60
Libby's Fancy Red Salmon	.25
Pillsbury Flour, 24 1-2 lbs.	.38
Gold Medal, 24 1-2 lbs.	.38
Valley Brand Seedless Raisins, 3 15-oz. pkgs.	.25
Kirk Hard Water Soap, 4 bars	.25
Red Cross Macaroni and Spaghetti, 4-oz. pkg.	.25
Krispy Cracker, 1 lb.	.18
Krispy Cracker, 2 lbs.	.35
100 lbs. Salt, medium	1.00
56 lbs. Packers salt	.75
100 lbs. Rock Salt	1.25
Apples, per peck	.50

MEAT CROCKS

Bring in your Poultry and eggs. Trucking of all kinds.

A. B. Clark & Son

THE LITTLE STORE AROUND THE CORNER



Exide BATTERIES

Exide quality is accepted the world over as the standard for judging batteries. No one questions this. At its present low price no one can question the economy of buying an Exide—the long-life battery. Stop in and ask us about prices.

MOHRLOCK'S GARAGE

Chelsea, Michigan

Save Money on Hardware

The price of hardware is regulated by the quality and service that you get out of the things you buy, not by the first cost.

This "Farm Service" Hardware store specializes on money saving hardware by giving you the utmost in quality for the money you are paying.

The best is always cheapest for it saves you the cost of replacement or breakdown at the time you need service most.

BUY HERE AND SAVE MONEY

Agency for Maytag Washer

Chelsea Hardware Company

Phone 32, Chelsea, Michigan

The Chelsea Standard

Published every Thursday.
M. W. McCLURE, Publisher.

Consolidation of:
The Chelsea Herald, est. 1871.
The Chelsea Standard, est. 1889.
The Chelsea Tribune, est. 1907.

Subscription price: \$1.50 per year;
six months, 75 cents; four months,
50 cents.

Entered in the postoffice at Chelsea,
Mich., as second-class matter.

MAKING A CABINET

Mr. Hoover, who perhaps wishes he were back in Latin America, has been receiving a vast amount of advice concerning the composition of his cabinet. Some of this advice, no doubt, is disinterested, intelligent and possibly helpful but much of it, possibly most of it, is advanced more in the interest of a party, an individual or a group than of the whole public. Practical politicians place great emphasis, in their counsel on such a subject, on the importance of rewarding political service or of pleasing a geographical section or a commercial, religious or reform organization, or, in these latter days, a sex. A great many unwise cabinet appointments have been determined on such a basis in the past. These considerations, which appear so important to practical politicians, are of no importance from the standpoint of the public interest. The public interest lies in the selection by the president-elect of a cabinet of individuals of character, ability and diligence, who will work together to help him give the country the best administration possible. Superlative fitness for the job is the one important thing. Geography, past political service, group connections and sex are of no moment. We trust Mr. Hoover takes this view. He has a wide acquaintance among men in public life and for it and he wisely made an opportunity for himself lately to do much quiet thinking. The great man listens to advice; may profit by it; but in the end he relies on his own judgment. A modest self-sufficiency is an attribute of greatness.

ARMY FLIERS MAKE NEW RECORD

All world records for sustained flight by air craft, both lighter-than-air and heavier-than-air, were shattered by the performance of the Question Mark, the army plane, in its endurance test at Los Angeles, when it remained in the air 150 hours, 49 minutes and 15 seconds. Not only did the Question Mark outdistance all other sustained plane flights but it ran far ahead of the records made by dirigibles, the record of the Dixmude being 118 hours. Even with that long test the Question Mark landed with two motors operating as freely and certainly as when the flight was started. Only one of the motors had failed under the long strain.

The demonstrated ability of a crew of five men to keep a plane in the air for that long period of time is valuable, and the time test of the motors is of the highest mechanical importance. Just what part of the motor failed, after more than six full days of continued flight and operation, will be determined. Motor experts hope to gather an abundance of information when they dissect the motors and learn at what points strength may be added to make them even stronger than they are now.

The refueling of the Question Mark in the air and in flight was handled successfully, no delay being occasioned and no injury sustained by men on either of the ships. As the test affected man and machine the endurance trial brought rich results, providing valuable information in a field where only a few tests had been made and where additional knowledge was needed for the future. It is to the credit of the army fliers that they

planned the endurance test and carried it to a successful conclusion. They had the vision to see, the ability to plan, the courage to undertake and the skill to accomplish. They have served their nation well and have won world credit for their branch of the service.

When the flight was started experts said, barring accidents, the plane could remain aloft and in flight for a thousand hours, but, counting human endurance and mechanical strain, the test probably would be ended inside of 200 hours. The results show these men were correct in their estimates. Thus far man has constructed fine motors but they have their limitations, and the results at Los Angeles have indicated about where that time limit is to be found. But the limit of the fliers' courage and skill remains to be determined.

THE S-4 IN A NEW ROLE

Just a year since she was rammed and sunk with a loss of two score lives, the submarine S-4 is being put to the first of a series of tests and experiments which may revolutionize rescue and salvage work on undersen boats. Since being raised last spring the S-4 has been rebuilt and reconditioned for experimental purposes. The experiments will continue over a long period of time and under all sorts of conditions.

First of the tests to be held has to do with the practicability of using a set of lifting eyes fitted into the hull of the S-4. When the stricken ship was finally raised it was by running lines under her as she lay at the bottom of the sea, and to these lines huge pontoons were attached, with great difficulty. The new lifting eyes are designed to permit pontoons to be attached to them. The S-4 is also newly equipped with an "escape lock" designed to permit the escape of imprisoned men, with hatches and doors of improved design, and with special couplings over which a new type of diving bell can be lowered.

The S-4 is without motive power, her main engines having been removed to facilitate the tests. Her remaining apparatus has been concentrated in two of her five compartments, leaving three available for flooding to stimulate conditions if she were wrecked. Another important series of tests will have to do with the newly developed "lung" apparatus as a further protection to life. The Defender, an early type of submarine, built in 1902, has been refitted for underwater salvage work and will provide an underwater diving chamber for the divers in the experiments, being capable of descending over a sunken craft.

Even a landsman recognizes the importance of the experimental work the navy is carrying on, even if he does not understand all of the details. Accidents to submarines in the open sea have frequently cost the lives of all on board. The salvage of the S-4 constitutes one of the most fitting that the navy has ever undertaken. The reconditioned S-4 should be on her present assignment which may lead to a new day in submarine operation.

Auto Owners Settle For Scott Death

The Auto Owners Insurance Co., of Lansing, through the Powers-Dille agency has settled the claim for the death of Scott, the Port Huron young man, who was killed when two cars collided near Pottersville late last summer. It is understood the father was paid \$3,500; the occupants of the machine with Scott were paid \$1,000 and Mrs. Lee Chandler, the owner of one of the cars in the mishap, is given a new machine. Mr. Dille said the settlement cost his company around \$8,400. —Charlotte Republican-Tribune.

Mrs. Chandler is a daughter-in-law of Mr. and Mrs. E. H. Chandler and is a frequent Chelsea visitor.

ALONG LIFE'S TRAIL

By THOMAS ARKLE CLARK
Dean of Men, University of Illinois

FORGOTTEN PAINS

The experiences we are having to-day are more vivid and real in our minds than any we have previously had. Pictures fade as time pushes them back into the distance.



"Did you ever see anything like it?" Jones asks me. He is talking about the weather, "which has been pretty snappy for the last two or three days and has involved the shovelling of a good deal of coal unless you are fortunate enough to have gas—or oil—or electricity in the house. Now Jones forgets that two years ago the thermometer went two degrees lower for two days longer than it did this last time. That coal has been shoveled, that shivering done, the unpleasantness resulting from that spell of weather is in the past, and Jones has entirely forgotten that he said anything about it two years ago."

"You know," he says to me, "I've heard more howling this semester about the awful examinations they are piling upon the fellows than I ever did before, and I know I've never been through such a siege."

"Plinking!" I inquire, sympathetically.

"No," he says, "I guess I've done better than I have ever done before, but they certainly are raising the standards."

I laughed. I had heard the howling forty years before, and the announcement of the rapidly rising standards had been broadcast at the end of every examination period in those far-away days as they are now. We forget from one year to another what trials each season brings. The memory of the pain of five years ago is forgotten in the effort to endure stoically what we are now suffering.

(© 1928, Western Newspaper Union.)

The Late Mr. Goodban

Throughout his life Percy T. Goodban, a resident of London, had the reputation of being late for his appointments. Just to play a joke on his friends he instructed the undertaker in his will to be ten minutes late with his body for the funeral ceremonies. Goodban died recently and the undertaker did as he was instructed. —Cannon's Weekly.

Fireplace Visions

A fireplace properly utilized is a feeder of the imagination. Many a child has seen his first splendid vision of romance, of poetry, of undying beauty, in the glowing embers of the open fire.

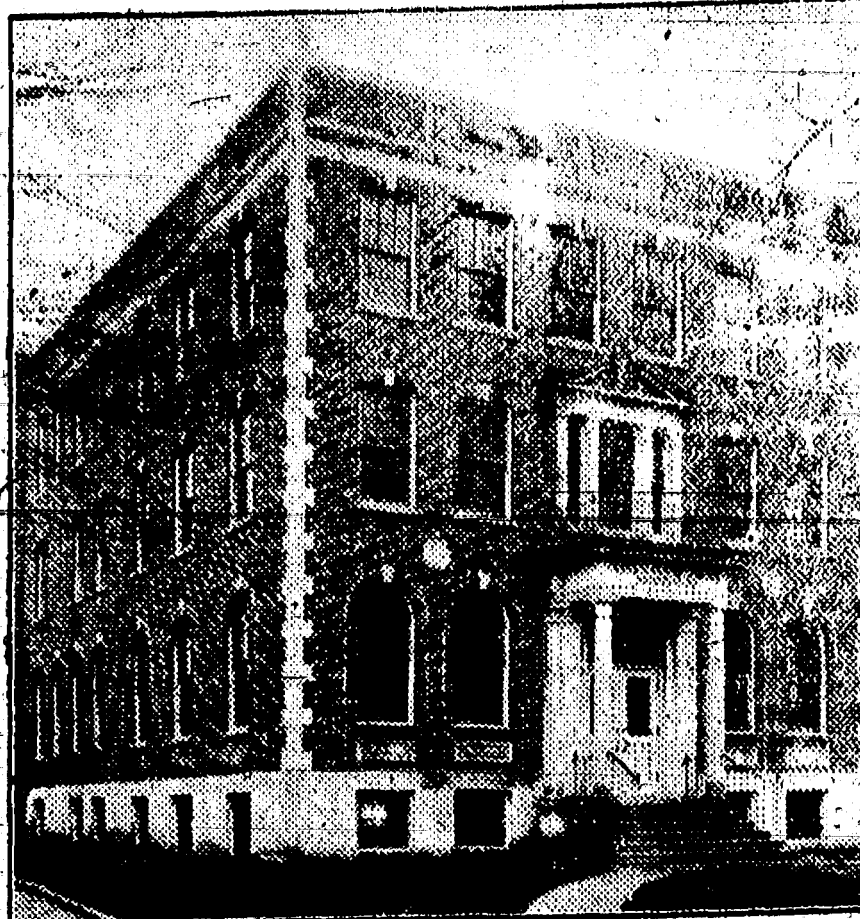
COMMERCIAL COLLECTIONS

Professional men and individuals use our service. We buy notes and accounts of any nature.

FRED P. LIRETTE
—RONDED COLLECTOR—

Old First National Bank Bldg.
Phone 6893 Ann Arbor

School Teachers and Executives Have New Headquarters In Lansing



The new office building of the Michigan Education Association at Lansing is shown above. It is a three-story brick and stone structure, costing approximately \$75,000, including the site. It embodies the latest type of office building efficiency to which is added the beauty of American Colonial architecture. It is located at 935 North Washington Avenue, just outside the Lansing business district. This location gives the quiet and convenience of a residence environment, having the special advantage of ample parking space for automobiles. This new structure is now the headquarters for an organization of more than thirty thousand teachers and school executives of Michigan. Membership in the Michigan Education Association includes approximately ninety-five per cent of all the teachers, principals, supervisors, and superintendents of public schools in Michigan. This organization formerly was known as the Michigan State Teachers Association. The name was changed to more accurately signify the objectives of the Association, namely, to promote educational interests and to elevate the profession of teaching. Executive offices of the various departments of the Michigan Education Association were moved to the new building early in January. On the main floor are the offices of the Executive Secretary, E. T. Cameron, the Michigan Education Journal (official publication of the Association), the assistant secretary, office help, also a reading room and library for members of the Association, and a board of directors' and committee room. On the second floor is the Teachers Placement Bureau of the Association and the display rooms, receiving and shipping rooms of the Michigan Reading Circle. This department supplies at cost to school libraries books from the preferred list recommended by the State Superintendent of Public Instruction and the State Librarian. The third floor of the new building is being leased to the Teachers' Retirement Fund Board.

WATERLOO

There were no services at the U. B. churches Sunday on account of sickness and severe weather. Mrs. H. E. Foght and sons, Bob and Jack, of Detroit, spent Friday and Saturday at the home of W. Vicary and family.

The Ladies Aid will meet at the home of Mr. and Mrs. W. Vicary on

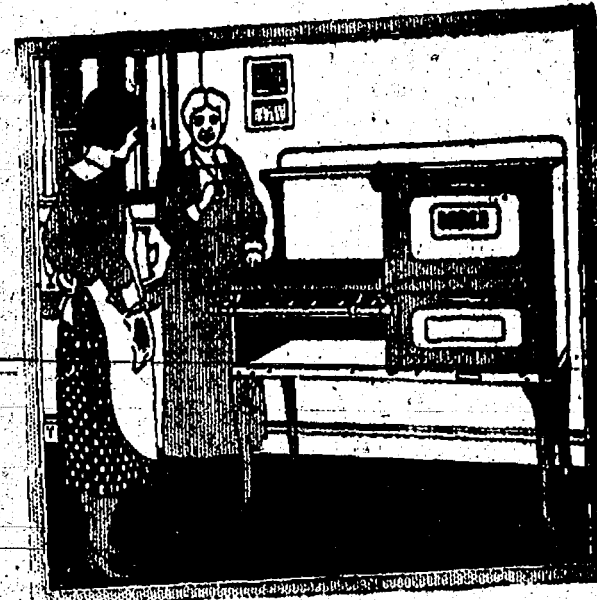
Thursday, January 24. Dinner will be served at noon. Everyone is cordially invited.

Mr. and Mrs. Arthur Wiltz attended the funeral of the former's uncle at Munith on Saturday.

Mr. and Mrs. Emory Runciman and children visited relatives at Henrietta on Sunday.

Try Chelsea first.

A Safe Investment in EFFICIENCY



\$5.00 Allowance on your old stove.

Why waste fuel and energy unnecessarily. An oven heat-control gives women more freedom than any other modern appliance. Through this month we will allow you \$5.00 on your old stove, carry it away and set the new one free—where no piping is required.

Washtenaw Gas Co.

ANN ARBOR, MICH.

Drastic Price Reductions Make This January Clearance of DRESSES

the most outstanding event in Washtenaw County

REDUCTIONS TO \$12.75

Includes many late fall and winter dresses. . . All good styles.

REDUCTIONS TO \$14.75

Includes markdowns of higher priced dresses in silks, satins, and wool.

REDUCTIONS TO \$19.75 and \$25

Includes all of our high priced, exceedingly clever dresses

SHOP ON THE SECOND FLOOR FOR THESE SPECIALS

Phone 4161

March 15, 1929

ANN ARBOR, MICH.



for Economical Transportation

Sylvan Chevrolet Sales & Service, Inc.

Phone 47 Chelsea, Mich.

SPECIAL! Ten Point Winter Tune-up

- I. Grind Valves. a. Valve seats reseated. b. Valves refaced. c. Remove carbon.
- II. Blow out gas lines, clean carburetor and screens.
- III. Adjust carburetor for winter driving.
- IV. Clean all spark plugs and set gaps to proper clearance for winter driving.
- V. Clean breaker points and adjust ignition timing.
- VI. Clean generator and starting motor commutator.
- VII. Adjust generator 3d brush for winter driving.
- VIII. Tighten water hose connections and replace hoses where necessary.
- IX. Adjust fan belt to proper tension and replace if necessary.
- X. Test alcohol solution—Test and refill battery.

Labor—\$5.00. Additional charge for materials used.

Plainly Marked Prices

We now make a practice of indicating by an easily read price tag, the complete cost of any given funeral.

This makes it a simple matter for the family to select something that will be well within their means, and at the same time something eminently satisfactory.

S. A. MAPES B. I. PLANKELL

Mapes & Plankell

Funeral Home

Phone No. 6 GET A USEFUL MAP

"At Your Service"

Wall Paper and Paint Headquarters

WENZEL'S

Painting and Decorating

207 E. LIBERTY ST. ANN ARBOR

Before Buying That New Car See the

NEW REO

The Golden Standard of Values

REO AUTO SALES

317 W. Huron St., Ann Arbor

Fine Job Printing of All Kinds

TRAINER OF GIRL GYMNASTS SCOFFS AT FADDISTS' DIETS



G. H. Heineman, Physical Director of the Philadelphia Turngemeinde.

By MADALIN MILLER

When a girl starts life as an unusually frail child and then develops into a champion gymnast there must be something in her story to interest every girl and woman. On this theory, I went to the gymnasium of the Philadelphia Turngemeinde, the largest gymnastic club in the United States, and sought out Roberta Ranck who has had just such a remarkable history.

The first question I asked was how she had managed the physical transformation that had enabled her to capture every major woman's gymnastic championship at Churchill Downs, Kentucky, in 1926, and to follow that up by acquitting herself with distinction at the International Gymnastic Festival at Cologne, Germany, last summer. In reply she pointed to G. H. Heineman, the Turngemeinde's Physical Director. "There's the man who built up my health and strength," she said. "He'll tell you how he did it."

A Sound Prescription

Mr. Heineman was coaching one of his classes of girl gymnasts, but he took time off to tell me what I wanted to know. "Plenty of sleep, plenty of exercise and plenty of good, wholesome food—that was my prescription," he assured me. "I suppose you made her stick to one of those terrible training diets," I said with a shudder. "Baked potatoes and spinach and other things like that."

Mr. Heineman smiled at my vehement disgust and shook his head in denial. "Roberta and all those girls you see out there," he said, pointing to his class, "eat just such foods as every normal person craves. They don't gorge them-

These are not Follies girls, but a few of the members of one of the Turngemeinde gymnastic classes. selves, but they certainly aren't victims of any freak diet.

"It's my firm conviction," Mr. Heineman continued, "that you can't build a strong and healthy body on any diet that eliminates or appreciably reduces the essential energizing foods. The physical condition of a great majority of the girls who are struggling to attain a boyish figure at any price is proof enough of that. Their lack of stamina makes them susceptible to sickness and fatigue, and it's a handicap to them in everything they do.

"They deprive themselves of sugar or some of the other carbohydrates in an effort to cut down their daily consumption of calories and what's the result? Take sugar as an example. When they eliminate sugar and sweets they rob themselves of one of the most valuable of all the sources of human energy, and the joke of it is that sugar and sweets are no more fattening than any one of a score of other foods.

A Mere Man Speaks

"If women would forget their dieting fads they'd not only be healthier and stronger, but a whole lot more attractive to look at. I don't know what's responsible for the present vogue of the excessive slender feminine figure, but speaking as a mere man, my platform is more curves and fewer angles, and if you polled my own sex, I think you'd find that the great majority agree with me."

Mr. Heineman is outspoken and positive in his condemnation of the fads that govern the diets of a large proportion of women, but then he has a right to be. He graduated from the Normal Col-

Roberta Ranck, America's premier woman gymnast.

lege of the American Gymnastic Union at Indianapolis, where he majored in physiological chemistry, and his long experience in the human laboratory work afforded by his athletic charges has fitted him to speak with authority on health-building and diet.

As living evidence of the soundness of his views, he has 1,200 members of his classes in addition to Roberta Ranck, the girl whose life, when she was six years old, was despaired of by her parents, and who today is America's premier woman gymnast.

Cattle In Washtenaw Will Be Given Tests

All herds of cattle in Washtenaw county are to be given TB tests and every veterinary surgeon in the county will be given an opportunity to do a portion of the work.

Dr. C. C. Lane of Chelsea, has had the herds in Sylvan, Lyndon and Dexter townships assigned to him to do the necessary work.

Monday of this week Dr. Beck, of Lansing, was here and started Dr. Lane on his work. Dr. Lane has had considerable experience in testing cattle for TB in this vicinity and he is familiar with the work which will occupy his time for several weeks.

Legend Shows Indians' High Sense of Humor

A stole he may have been but in many of the hardships that made him stoic the American Indian displayed a humorous appreciation of the desperate situation that ranked him with the best of all philosophers—those who can and do laugh at life. Witness his legend of the naming of Tusquichee, a mountain in western North Carolina.

Long, long ago a great drought seized the very heart of summer in the Appalachian country, many mountain streams drying up so that large numbers of fish and animals perished. One day a hunter, throat parched, but empty in seeking a deep-water hole where there might be sustenance, his arrows could obtain, heard strange voices nearby. Stepping in that direction, he discovered it was two water dogs. They were walking about on their hind legs on the dry bottom of their pond and discussing the drought.

One of them said to the other, "Where is the water? I am so thirsty that my apron (meaning his gills, presumably) hangs down almost to the ground, and I fear I shall tread upon it."

Then both water dogs laughed. "You're right, therefore," "Where the water dogs laughed."—Detroit News.

Geogies for Dog Motorists

Thousands of pairs of goggles for dog motorists are being sold in London. Fond owners have learned that their pets love motorcycling, but dislike the grit that gets into their eyes.

George L. Alban

George L. Alban, aged 60 years, died at his home in Clinton on Tuesday, January 8, 1929, and the funeral was held from the family home Thursday afternoon, with burial at Clinton. For the last thirty-three years he had been a city letter carrier in Adrian, and most of his services were on the same route during this time. He is survived by his wife, two sons and two daughters. Mrs. Vance Ogden of Chelsea is one of the daughters.

Firefly's Tail Light Diffuses Little Heat

The fireflies, or "lightning bugs," which dance in the twilight, carry torches that burn on the same principle as a lighted candle. That is to say, they combine a combustible substance with oxygen and produce light. The great advantage enjoyed by the firefly is that his tail light makes so little heat; it can fairly be called "cold light."

The substance consumed to produce the firefly's light is luciferin. The shining of fireflies, and of other animals and plants, used to be called phosphorescence, because it looks like the light given off by a piece of rubbed phosphorus in the dark.

But it is not caused by phosphorus. Luciferin really means "light-bearer." By itself it does not glow, but a second substance known as luciferase, present in all luminous organisms, causes it to combine with oxygen, and this makes the luminescence.

Watermelon Long Known

According to Master Graves, the watermelon abounded in Muskhoguetts in 1620, only nine years after the landing of the Pilgrims. The Indians lost little time adding it to their list of cultivated plants. In 1644 the Florida tribes were cultivating it in their fields of maize, and nine years later Father Marquette found among the western tribes melons "which are excellent, especially those with a red seed." The tribes on the Colorado river were cultivating watermelons before the death of George Washington. It is easy to see, now, the watermelon spread so quickly to all parts of the American continent, because the seeds can easily be carried from place to place and planted, and because the Indians showed a fondness for the fruit from the beginning.

Wed to Get Clean Shirts

In the course of a trial in Brighton, England, a police court judge asked a man if he never loved his wife why he married her. The accused husband's answer was, "To get a clean shirt." The astounded magistrate sentenced him to do the household washing for one year, and told the aggrieved wife to report to him if the man didn't do a good job. The magistrate's parting remark was: "Now you will have clean shirts."

Goose Is Little Known

The Ring-necked goose, which breeds in small numbers of the Yukon delta in Alaska, is the most handsome and least known of all the wild geese of North America. Ornithologists declare formerly abundant, the ranks of this goose have been badly reduced by the incursions made by Eskimos during the nesting season.

Historians Unable to Place Queen of Sheba

The nationality of the queen of Sheba, mentioned in the Bible in connection with a visit to King Solomon, is unknown for certain. It is supposed, however, that "Sheba," is merely a variation of the word "Saba," which was the name of a country on the Red Sea in southwestern Arabia. This region is now known as Yemen. The Shebans were dark-complexioned white people and belonged to the same general family of mankind as the Hebrews. They had extensive colonies in Africa, where they mingled with the Ethiopians, with whom they are sometimes confused. The Abyssinians have a tradition that the queen of Sheba who visited Solomon was a monarch of their country and their royal family claims descent from Menelik, an alleged son of the queen of Sheba by King Solomon. The queen who made herself famous by her spectacular visit to King Solomon was very likely the same person known in history as Queen Balkis of the Shebans.—Pathfinder Magazine.

Wild

Dave and a group of other country lads were spending the afternoon trying to yoke up a couple of calves. Try as they would, they could catch only one calf, so Dave volunteered to be yoked up with it. The frightened animal immediately bolted, as soon as the straps were tightened, taking the yoked and helpless Dave along with it. Away they went, careening into trees and banging against fences, bumping and thumping. As soon as the other boys could recover a little from their gales of laughter, they set out to capture the assorted pair, and were advancing toward them, when the human half, in a warning tone, begged "Come up easy, boys! We're wild as heck!"

FREE! FREE!

WORCESTER CHINA WARE TO OUR CUSTOMERS

You can secure a 100-piece set of Worcester China Ware by trading here. We have made arrangements to distribute this high grade ware. Our New Co-operative Advertising Plan is your opportunity to fill your china closet with Beautiful Worcester China Ware.

HART MOTOR SALES

N. Main St. Phone 199 Chelsea, Mich.

Exceptional Coffee Values in all A & P stores this Week

A & P Now

is the time to buy Good Coffee at a Low Price! Look at these fine Prices!

Bokar Coffee

Blend Supreme

39c

8 o'Clock Coffee

Gold Medal Winner

3 - \$1.00

For those who prefer a mild, smooth coffee. The cream of the Santos coffee crops. Eight o'Clock Coffee won a Gold Medal Award at the Philadelphia Sesqui-Centennial Exposition in 1926.

BREAD

Grandmother's Twin or Regular

Pink Salmon	1 lb 18c
Flour Gold Medal of Philadelphia	5 lb \$1.05
Holland Herring	1 lb 99c
Del Monte Apricots	1 lb 21c
Sweet Pickles	6 lb 13c
Diamond Crystal Salt	2 lb 10c
Rolls Oats	25 lb 94c
Apple Butter	1 lb 23c
Iron Flour	20 lb 85c
White House Milk	3 can 25c

NUTLEY OLEO,

DEL MONTE WEEK Is Coming Ask The Manager

THE ATLANTIC & PACIFIC CO.

Established 1899

CLEARANCE

SILK DRESS CLEARANCE

Your choice of entire stock

\$15.95

One lot of \$16.50 to \$25.00 Dresses

\$10.95

Another lot of \$12.50 to \$15.00 Dresses at

\$6.95

All Wool and Jersey Dresses

Now at

\$3.95 - \$5.95 - \$10.75

Values to \$20.00

ALL

Children's Dresses

Silk and Woolen

At Cost and less.

J & K Shoes

Another reduction in price
always \$9.00 and \$10.

Your choice

Now \$5.95

CLEARANCE OF ALL

Wash Dresses for
Women and Misses

VOGEL & WURSTER

Chelsea, Michigan

Your Choice of
Any Coat in our stock
HALF PRICE

36-inch

OUTING

Plain Peach and Flesh only.

Regularly 25c, now

18c Yard

ALL

Lace Curtain Materials

NOW

One-third Off Reg. Price

All Women's Scarfs

1/2 PRICE

ALL SWEATERS

(Women's, Misses' and Children's)

at less than wholesale costs

Big assortment for boys and girls.

Clearance of all
Lunch Cloths & Linen SetsKimonas and Bath Robes
at less than we paid36-inch Chiffon \$5.00 Silk
Velvet, black only, \$2.98

W. R. C. Officers Installed Tuesday

Installation of officers of the W. R. C. took place Tuesday afternoon at their regular meeting. Mrs. H. N. Beals of Alton, Illinois, acting as installing officer. The recently elected and appointed officers are as follows:

President—Emma Leach.
Senior Vice Pres.—Helen Kilmer.
Junior Vice Pres.—Jennie Atkinson.
Secretary—Nellie Laird.
Treasurer—Ida Webster.
Chaplain—Agnes Runciman.
Conductress—Leora Collins.
Asst. Conductress—Nina Crowell.
Guard—Agnes Mayer.
Patriotic Instructor—Josie Johnson.
Press Correspondent—Stella Manus.

Banner Bearers—First, Amelia Van Riper; second, Kittle Wurster; third, Florence Vickers; fourth, Myrta Schieferstein.

A pot luck supper for members and their families was served at 6:30 after which a short program was given, opening with community singing. Reading, "My Carving Knife," by Mrs. Maude Van Horn and "Any Fool Can Knock," by Mrs. John Kilmer were rendered after which Mrs. Ida Guerin presented Mrs. Beals, the installing officer, with a box of candy and Mrs. Leach, in behalf of the Corps, presented Mrs. Guerin with \$5.00 in gold as a token of appreciation for five years of service as president of the organization.

Insurance Company Elects Officers

The stockholders of the Northwestern Washenaw Farmers' Mutual Fire Insurance Company held their annual meeting in the Sylvan town hall Wednesday afternoon with a fair attendance. The company is in a good financial condition, and their rate of assessment to cover losses for the last year is \$3.00 per thousand. All of the directors were re-elected, with the exception of one, Thomas Peatt, of Webster who was chosen to succeed Mr. Reed who died recently. At the directors' meeting following the stockholders' session, W. B. Collins of Lyndon was re-elected president, and A. J. Easton of Lima, who has filled the office of secretary-treasurer for nearly twenty-five years, was chosen for another year.

Singing Insects Bred as Pets by Japanese

It is, in the summer, that Japan's trade in singing insects becomes most brisk. The largest wholesale insect store in the country offers its customers a rich variety of little singing friends.

The cinnamomum, or cricket, can be had for the equivalent of a dime, but the katydid, a noisier creature, fetches a quarter. During the early summer season fireflies cost about a cent apiece, but the price drops as summer advances and 100 of the merry fellows can be purchased for as little as 75 cents.

The chief insect store in Japan maintains three breeding stations in the suburbs of Tokyo, and it prides itself on supplying the imperial household with indispensable bugs.

A really fine insect cage sells for as much as \$100, occupants and all. Protection of the insects' eggs calls for the highest skill, and under circumstances are visitors allowed to enter the breeding grounds, whose pampered occupants live on mulberry leaves—Living Age.

Equal to the Occasion

With scarcely a sound the luxurious car pulled before the seaside hotel, and an old gray-haired man descended.

"My doctor insists on my staying where the south wind blows continually," he remarked to the manager. "Does it blow here?"

"It does, sir," returned the other. "You are very fortunate to have stopped at exactly the right place. The south wind always blows here."

The old man stuck a moistened finger in the air.

"Always," he repeated. "Are you sure? It appears to be coming from the north just now."

"You're right of course, sir. It's on its way back."

Mud Walls of House Defy Time's Ravages

Near Stella, Amherst Island, at the eastern extremity of Lake Ontario, is a mud house erected 100 years ago and probably the only one of its kind on the North American continent. It should be of archeological and historical interest because it differs from the adobe brick houses of the South west in that the mud walls were molded in one piece. They were evidently built in a form, and the clay, mixed with straw, was tamped into shape with spindles imbedded about six inches apart. A correspondent of the Toronto Globe says the house was built for a British army officer who sent to Ireland for a mechanic skilled in such construction. In the latter country there are many similar houses, other building material being scarce.

The walls of the Amherst Island house were made eleven feet high and four feet thick and were originally plastered, but now are protected by clapboards. Other than that no chimneys or repairs have been made in the century of its existence.

Chelsea High Wins Game At Howell

In a fast game against the stiffest opposition they have met this year, the C. H. S. Varsity came through on the long end of the score in a game with Howell last Friday night at Howell. In the first half Chelsea's defense was almost perfect. Howell scored only one field goal. The Purple and Gold offense worked like a clock and the points began to pile up. The score at the half was 12 and 5, Chelsea.

In the second half Howell tightened up and held Chelsea down to 8 points. They could not, however, overcome the lead that Chelsea had.

The Howell boys were a fast aggregation and played a fine game but the C. H. S. boys have improved such a great deal in the last two games that victory was inevitable.

The final score was 20 to 16, Chelsea. Friday the Varsity and the Reserves go to Ann Arbor to play University High. They hope to bring home two more victories.

Sing Sing

Sing Sing is a famous New York state prison located at Ossining, a town on the Hudson river about 30 miles north of New York city, says the Kansas City Times. The town itself was originally also called Sing Sing, supposedly from the Sing Sing or Sigt-sink tribe of Indians, who once lived in that vicinity. In 1901 the name of the town was officially changed to Ossining, the old name having become objectionable to the inhabitants because of its popular association with the penitentiary. "Ossining" is merely a different form of "Sing Sing," both words being corruptions of the Delaware Indian word "singasink," literally meaning "at the small stone." There is nothing to the popular story that Sing Sing was named after a friendly Indian whom the whites called John Sing Sing.

Coral Reefs Inland

Mention of coral reefs brings to one's mind a picture of palm-dotted islets girt with white sands in a tropical sea, but geologists find coral reefs in the midst of great continents. These, of course, belong to a past age of the earth's history, but on that account they are the more interesting. Within late years several remarkable reefs of fossil coral have been explored near Balmbridge, on the Elbe river, in Germany. In the case a very large portion of the reef exposed consisted of coral heads, some of which were more than a foot in diameter. Between 25 and 30 species of coral have been recognized in these reefs. They are ascribed to the Tertiary age.

Kiwianians Enjoy Illustrated Lecture

Rev. A. R. Heaps, pastor of First Congregational church, Ann Arbor, was the speaker at the Monday evening of the Kiwanis club. In a very clever manner he gave an illustrated lecture on the book "One Increasing Purpose" by Hutchinson, which was greatly enjoyed by the club. Rev. Heaps is a lecturer of note, having conducted a lecture bureau in New York City for several years, prior to his acceptance of the pastorate in Ann Arbor last fall. He has accumulated about fifty illustrated lectures which are greatly in demand throughout the country.

The musical program consisted of several vocal selections, rendered by Mrs. Paul F. Niehaus, and the popular Kiwanis trio were given a great ovation when they rendered one of their famed original classics.

GRASS LAKE FARMER KILLED WEDNESDAY

Apparently failing to see the signal lights which flashed a warning of the approaching train, Jacob Wellbough, 65, a farmer residing three miles southeast of Grass Lake was instantly killed Wednesday afternoon when he drove his machine directly in the path of an eastbound fast Michigan Central passenger train at the Lake street crossing in Grass Lake.

HENRY LANDWEHR

Henry Landwehr, 44, died Friday at his home in Sharon township. He is survived by the widow; two sons, Leroy and Dwane; his mother, Mrs. Catherine Landwehr of Sharon township; a brother, Herman of Sharon; and five sisters, Clara, Emma, Laura and Minnie at home, and Bertha of Jackson. The funeral was held from Emanuel's church, Manchester, Monday afternoon, with Rev. A. A. Schoen and Rev. C. Meyer conducting the services.

MRS. LAURA WRIGHT

Mrs. Laura Wright, aged 82 years, passed away at the Methodist Home Wednesday evening, January 16, 1929. Funeral services will be held Friday morning at 10 o'clock at the home. Burial will be in Laingsburg, Mich.

MRS. MARY ACKERSON

Mrs. Mary Ackerson died at the home of her daughter, Miss Nellie Ackerson in Manchester, Wednesday, January 16, 1929. For many years Dr. and Mrs. Ackerson were residents of Chelsea and moved from here to Manchester when has been the family home for a number of years. Dr. Ackerson passed away a few years ago.

IN OUR

Clothing Department

Men's and Young Men's Fancy Cassimeres and Worsteds Suits,

One-third Off Reg. Price

Men's Conservative Models,

One-fourth Off Reg. Price

All Men's Overcoats

Now selling at

One-third Off Reg. Price

\$25 Overcoats now \$16.67

\$30 Overcoats now \$20

Boys' 4-Piece Suits

These are the celebrated "Woolwear" make. Now selling at

One-fourth Off Reg. Price

Men's Wool Underwear

2-Piece or Unions, while stock on hand lasts at

One-third Off Reg. Price

Men's Silk Mufflers

Now selling at

One-third Off Reg. Price

Vogel & Wurster

Chelsea, Mich.

Who Has Missing Half of Cullinan Diamond?

When the Cullinan diamond, the largest in the world, estimated to be worth up to \$25,000,000, and which is among the British crown jewels, was dug from the earth at the Premier mines at Cullinan, South Africa, in 1905, it was found that one side was so flat and smooth that it was considered to be only part of a much bigger diamond. The enormous half brother, however, has never been found, although scientists, diamond miners, financiers, geologists and thieves have been searching for it for twenty-three years. Its whereabouts and even its existence are one of the world's mysteries.

South Africa abounds with strange stories of the missing half of the Cullinan diamond. One version is that it was found by a native worker in the diamond mines who feared to dispose of it because of the strict law governing the illicit selling of stones. A notorious criminal once almost had his hands on it, the story goes, but he attempted to trick the native who was prepared to sell it to him and the native fled with the diamond.

Happy States of Mind

A general loftiness of sentiment, independence of mind, consciousness of good intentions, self-reliance in great objects, clear views of futurity, thoughts of the blessed companionship of saints and angels, trust in God as the friend of truth and virtue—these are the states of mind in which I should live.—Channing.

Wealth From "Scrap"

By the system of reclamation of the scrap pile now being generally followed by nearly all the railroad companies, bright new tin buckets, cups and other articles are being manufactured from old metal cooling, empty powder and carbide containers and other junk salvaged. Old broom handles are made into shafts for signal flags; old canvas is transformed into curtains for the locomotive cabs and coaches; steam-pipe coverings and aprons. Thrift practices such as these save the carriers hundreds of thousands of dollars annually.

Personal Work

Years ago C. H. Shurgeson, advocating personal work, said: "If you had one hundred empty bottles before you, and threw a pull of water over them, some would get a little in them, but most would fall outside. If you wish to fill the bottles, the best way is to take each bottle separately and put a vessel full of water to the bottle's mouth." That is successful personal work.

Just One more

Bobby, a five-year-old Irvington boy, has reached the inquisitive age. The other day he was particularly annoying, and his mother was busy answering his questions. Finally she could stand it no longer. "Bobby, stop asking those foolish questions and run out and play," she ordered. "Oh, just one more," pleaded Bobby. "Say, if I was twins, which one would I be?"—Indianapolis News.

Sun Long Worshipped in Egypt and India

"Since nothing was known of the rotation of the earth in the days of long ago, one can easily imagine how very real yet mysterious the movement of the sun must have seemed and how naturally it was an object of wonder and reverence. The sun's daily journey, its contest with the darkness and its final victory at the dawn of the new day are ideas which have led to endless stories.

In the great sun god of the Egyptians, was thought to travel in a ship across the waters of the sky by day and return during the night through the kingdom of the dead. This god was always represented either as a hawk or as a man with a hawk's head in accordance with the belief that the hawk always flies toward the sun. In India the sun was worshipped as the god Agni, who rode in a shining chariot drawn by blood-red horses. In ancient Hindu art this golden-haired god was portrayed as having a double face, seven tongues and seven arms. The number seven was held sacred by the Hindus and was thus employed to symbolize the numerous and varied duties performed by Agni.

Ear of City Dweller Has No Rest Period

Between beats the heart rests and between breaths the lungs and diaphragm have an instant's respite. All the nerves and muscles of the body have some time when they are relieved of duty except those of the ear in the noisy city. This is pointed

out by ear specialists, who say something must be done about it to lower the amount of deafness.

City noises going on day and night keep the ear drum and the tiny bones about it in a constant state of vibration. People accustomed to them sleep comfortably through normal night sounds because the nerves are adapted to something like a temporary disconnection with the brain centers.

Nocturnal periods of rest for the ears seem as remote for the average city dweller as the pot of gold at the foot of the rainbow. His days and nights are a bedlam of motor exhausts and horns; the footsteps and voices of passersby and the thousand and one other noises of the city street.—Lebanon Reporter.

The Birth of London

No one can say when London began; the beginning is lost in the mists of time. London is first mentioned in a passage in Tacitus, a Roman historian, whose uncle, General Agricola, spent most of his active military career in Britain. Tacitus describes the Roman London of A. D. 61 when it was sacked by Queen Boadicea—the British warrior queen.

It is one of the strangest things in London's history; that she should first appear at the moment when she was sacked by a British queen, and that that queen's statue should now stand in a place of honor under the palace of Westminster, looking down the Thames. It is strange, but it marks that peculiar position of London as the meeting place of the races out of which the English people were made.

Hindelang To Enlarge Furniture Department

The Hindelang Hardware company is rearranging the interior of their store in order to furnish more space for furniture display, which department will be made much larger than in the past.

House furnishings and light hardware are now arranged on a number of display tables and with a larger showing of furniture will make the store handier and more attractive.

Try Standard Liners, 25c.

ST. PAUL'S WILL ENTERTAIN CONVENTION

The 20th annual convention of the Evangelical League and Sunday schools of the Ann Arbor district will be held Saturday and Sunday, January 26 and 27, at St. Paul's church. A banquet will be served Saturday evening by the ladies of the church in the public school auditorium.

LYNDON TAXPAYERS

January 19 and 26 will be the last days I will be at the Farmers and Merchants Bank, Chelsea, to collect Lyndon taxes.

24 Edna Cooper, Twp. Treas.

LOCAL ITEMS

Mrs. F. C. Klingler spent Monday in Ann Arbor.

Mrs. Claude Spiegelberg is ill with pneumonia at her home on Elm street.

Mr. and Mrs. Cleo Aldrich and son were guests of relatives in Adrian, Sunday.

The Cythereans were entertained Friday afternoon at the home of Mrs. Jabez Bacon.

Harper Sales & Service have on display in their salesroom one of the new Pontiac Big Six sedans.

Miss Nina Crowell was called to Grass Lake Monday, by the illness of her cousin, Mrs. C. E. Babcock.

Mr. and Mrs. William Degen of Ann Arbor, were Sunday guests at the home of her mother, Mrs. Mary Lowry.

E. J. Claire and Mrs. Dale J. Claire were in Archbold, Ohio the first of the week, where they attended the funeral of a friend.

Washtenaw county has received from the state as its share of the weight tax for the year 1928 the sum of \$162,210.01.

Mrs. H. C. Schlatter of Ft. Wayne, Indiana, is spending some time here, assisting in the care of her parents, Mr. and Mrs. C. Hummel.

Mrs. M. H. Frimodig, her daughter, Claire, and son Mark, of Pontiac, are guests this week at the home of Mr. and Mrs. Harold Frimodig.

Temporary repairs have been made on the McKune House, pending less severe weather when extensive remodeling and decorating will be done.

D. E. Beach was re-elected as secretary of Washtenaw Mutual Fire Insurance company at the annual meeting which was held in Ann Arbor last week.

The young son of Mr. and Mrs. R. M. Miller, of South Main street, who has been very ill for the last two weeks with an attack of pneumonia and whooping cough, is reported as improving.

Fr. John C. Sullivan, assistant at St. Aloysius church, Detroit, has been appointed pastor of St. Joseph's Catholic church at Dexter, by Bishop Michael J. Gallagher.

Mrs. Anna Eisen, wife of Rev. Theophile Eisen, a former resident of Chelsea, died Saturday in Andros, Indiana. The funeral was held Tuesday with burial in Sandusky, Ohio.

L. G. Palmer and Miss Lola Stokoe spent the week-end at Middleville. Mrs. Palmer, who had been at that place for two weeks assisting in the care of her father who is ill, returned with her husband on Monday.

L. G. Palmer and Roy Harris were in attendance at a meeting of Majestic radio dealers which was held at the Statler, Detroit on Monday evening. New models of the radio were announced and shown at this meeting.

The Republican State Central Committee on Thursday selected Lansing as the place for holding the republican party spring convention on Wednesday, February 20. Washtenaw county is entitled to send twenty-eight delegates.

The annual meeting of the German Mutual Fire Insurance company was held in the court house in Ann Arbor on Monday of this week. A large number of the policy holders from Sylvan, Lima, Freedom and Sharon were present.

A case of smallpox was reported to the health department in Ann Arbor, Saturday. The man resides on Broadway and is an employee of the Detroit Edison Co., who seventeen days before was in Saline where he is supposed to have contracted the disease, according to the report of the city health officer.

The county road commissioners have all of the county and state trunk line roads in this vicinity well cleared of snow. While between six and seven inches of snow fell here Monday, none of the highways in Sylvan have been reported to Commissioner Pritchard as being impassable.

Sherman Pierce, of Lima, spent Monday in Ann Arbor.

Mr. and Mrs. Chester Miller are the parents of a daughter, born Tuesday, January 15.

Mr. and Mrs. Lloyd Lantis of Sylvan township, are the parents of a son, born Wednesday, January 9.

The Chelsea Co-Operative Association is holding its annual meeting in the Sylvan town hall this afternoon.

Mrs. Geo. P. Staffan returned Sunday from Detroit, after spending several days at the home of her brother, Dr. H. C. Wood.

Miss Charlotte Moeckel of Jackson, was a recent guest at the home of her sister, Mrs. Alfred Lindauer and family of Lima.

J. Nelson Dancer, who is confined to his home on West Middle street, suffering from an attack of pneumonia is reported as improving.

Mrs. Elizabeth Wackenhut, who is spending the winter in Jackson, was in Chelsea Sunday to attend the funeral of Mrs. Louise K. Heller.

Miss Nadene Dancer, who is attending college in Ypsilanti, spent the week-end at the home of her parents, Mr. and Mrs. E. H. Dancer of Lima.

Mr. and Mrs. S. A. Mapes entertained at their home in Lakeland, Florida, for several days, C. H. Davis of Ann Arbor and J. W. Hamp of Chelsea.

Mr. and Mrs. Chauncey Hummel are both very ill at their home on Orchard street and their many friends are somewhat alarmed over their present condition.

Russell T. Wheelock, who suffered a slight relapse the last of the past week from his recent attack of pneumonia, is recovering as satisfactorily as can be expected.

Nadene Straub, who has been suffering from an attack of pneumonia, returned to her home on Sunday, having been a patient in Chelsea Private hospital. She is much improved in health.

At a special election held in Saline Monday the proposition to bond the school district for \$175,000 for the purpose of erecting a new school building was defeated by a vote of 176 yes and 136 no.

Mrs. Clarence McBride entertained the Chat-n-Seau of the Congregational church at her home on Tuesday evening. The evening was spent chatting and sewing. Refreshments were served by the hostess and the committee in charge.

The Priscilla Alden chapter of the Congregational church held their annual election of officers on Tuesday afternoon at the home of Mrs. M. W. McClure. The following officers were elected: President, Mrs. Belle Warner; 1st vice president, Mrs. M. W. McClure; 2nd vice president, Mrs. Harold Spaulding; secretary, Jennie Walker; treasurer, Mrs. Jas. Munro.

The Lima Center district No. 4 Parent-Teacher association held its monthly meeting Friday evening at the school house. Mr. and Mrs. E. H. Dancer entertained. Twenty were present.

Moving pictures "The Modern Cinderella" presented by Mr. Sanford of Jackson, were the main features of the program. Following the program and business meeting refreshments were served.

A sentence of from 10 to 20 years in the Michigan State Prison at Jackson was passed Tuesday on Charles Carroll, 55-year-old blacksmith, who confessed to robbing the Blissfield First National Bank Tuesday of last week. Carroll appeared in circuit court at Adrian without an attorney and pleaded guilty to a charge of robbery armed.

All of the \$17,000 which Carroll obtained in the robbery was recovered at the time of his arrest last Wednesday.

Learning From Patients

I lately met an old doctor who said most that he knows about medicine he learned from his patients, and not from medical books or schools.

And how he hated doctors!—E. W. Howe's Monthly.

WILLIAM BAUER, SHARON TWP. FARMER, ARRAIGNED ON MURDER CHARGE

William Bauer, 55, Sharon township farmer has been arraigned before Justice C. A. Reading of Ann Arbor on a charge that he had killed his brother, John, 62, in April 1925.

In a statement made by him last week he accused John Neff, 56, of Detroit, formerly of Northfield as being responsible for the crime committed nearly four years ago.

Bauer was given a three hour grilling last Saturday by Prosecutor Carl H. Stubbberg and held bail on a first degree murder charge for the preliminary hearing January 22. Neff who was brought to Ann Arbor from Detroit on a warrant charging him with the murder of John Bauer has been released from custody.

John Bauer was found dead in the barn on the farm of John Mike in Northfield township where he and William had gone to sleep the night before the discovery of his death. His neck had been broken and the spinal cord injured.

IN-MEMORIAM

In loving memory of Howard H. Luick who died a year ago, the 18th day of January, 1928.

A precious one from us has gone,
A voice we loved is stilled;
A place is vacant in our home,
Which never can be filled.
God in His wisdom has recalled
The boon His love had given;
And though the body stumbers here,
His soul is safe in Heaven.

We have lost our darling boy,
He has bid us all adieu;
He has gone to live in Heaven,
And his form is lost to view.
Oh, that dear one, how we loved him!
Oh, how hard to give him up!
But an angel came down for him,
And removed him from our flock.

Sadly missed by his parents,
sisters and grandparents.

COMMUNITY CALENDAR

Attention Woodmen! There will be an installation of officers and lunch at the hall Tuesday evening, January 22.

Harmony Chapter will meet at the home of Mrs. M. J. Baxter, Thursday, January 24, at 2 p. m. All members are urged to be present.

The Chelsea Arbor of Gleaners will hold a pedro party, Saturday evening, January 19, at Firemen hall.

Regular meeting of Pythian Sisters Tuesday evening, January 22.

OBITUARY

Irene French was born July 13, 1842 in Summit county, Ohio, and died January 6, 1929 in Opportunity, Spokane county, Washington, at the home of her daughter, Mrs. G. A. King.

At the age of sixteen she was united in marriage to Albert Congdon of Chelsea, where they lived for twenty years. After the death of Mr. Congdon, who died in 1878, she moved to the West where she has lived with her children since that time.

She is survived by one son, Fred, of Joplin, Mo., and one daughter, Mrs. G. A. King, and four granddaughters.

Private funeral services were held Tuesday, January 8 at Smith's mortuary, and were followed by incineration. The remains were brought to Chelsea to be buried on the Congdon lot beside her husband.

Mrs. Congdon was a cousin of Mrs. F. F. Thacher of this place.

BUY FIFTH DODGE CAR

Mr. and Mrs. Charles Clayton have received delivery on a new Dodge Brothers car, it being delivered to them last Saturday by L. W. Kern, local sales agent. This is the first of the new series Dodge cars to be delivered in this territory and is the fifth Dodge car owned and driven by Mr. and Mrs. Clayton.

Hear Ye! Hear Ye!

Don't Miss Seeing

"Aaron Slick From Punkin Crick"

At the

Public School Auditorium

TONIGHT

Thur., January 17

at 8:00 p. m.

A Comedy That Will Make You Laugh!

Presented by an all-high cast from Chelsea

High School.

ADMISSION: 20c and 35c

WEEK-END BARGAINS

4XXX Sugar, 3 lbs. for 25c

Campbell's Tomato Soup, 3 for 25c

Fancy Canned Corn 10c

Iodine Salt 9c

Kellogg Bran Flakes 9c

Roller King Flour 89c

(For bread and pastry it has no equal)

KEUSCH & FAHRNER

CHELSEA, MICH.

Now Is When You Need

good warm clothes and now is when you can buy them at reduced prices.

MACKINAW and SHEEP-LINED COATS, 1/4 off

OVERCOATS AT one-third off

WOOL UNDERWEAR at 20 per cent Reduction

LEATHER COATS, Men's and Boys' 20 per cent off

FLANNEL SHIRTS AT 1/4 off

See Special lot of footwear in our window at 98c.

We carry a full line of 'Ball Band' and 'Hipress' Rubber Footwear.

WALWORTH & STRIETER

CHELSEA, MICH.

ORPHEUS RADIOS

Before you buy, hear the all-electric Orpheus Radio. We also have battery types.

NO BETTER AT ANY PRICE

JONES' GARAGE

Phone 138 South Main Street Chelsea

THIS WEEK'S

Rite Way Grocery Specials

2 lbs. Blue Ribbon Dry Peaches	33c
3 Bars Ivory Soap	20c
2 Cans Silver-Fleece Sauer Kraut	25c
2-lb. Box Premium Soda Crackers	35c
1 lb. R Grocer Coffee	39c
3 Boxes Sure Pop Corn	25c

You will like Montgomery Butter, try a pound the next time.

Use Old Hickory Smoked Salt to cure your meat.

FREE—One Roll Bleachtex toilet paper with every two rolls at 25c.

Schneider & Kusterer

Buy the Best and Forget the Rest

CHELSEA, MICH.

Try Standard Want Ads. for Results!

PRINCESS THEATRE

Shows at 7:15 and 8:45 p. m.

Saturday, Jan. 19

"HOMESICK"

With SAMMY COHEN, Marjorie Beebe and Harry Sweet.

Laughter wins the contest in this Romance of Joy.

Comedy—"CROSS COUNTRY BUNION RACE"

Sunday, Jan. 20

"CRAIG'S WIFE"

With IRENE RICH and Warner Baxter.

A wonderfully poignant story abrim with drama, thrill, emotion and deep heart appeal.

WILLIAM DESMOND in

"The Mystery Rider"

CHAPTER I

A thrilling, intensely interesting serial in ten chapters. A chapter will be shown every Sunday night until finished.

Wed. - Thurs., Jan. 23 - 24

"THE WHIP"

With Dorothy Mackaill, Ralph Forbes, Anna Q. Nilsson, Lowell Sherman.

Twelve smashing, thrilling wonder scenes—powerful love story of racing horses—and Ritzy women—men who dare for a woman's smile—and the biggest train wreck you've ever seen.

PATHE REVIEW and FOX NEWS

EYESIGHT

Eyes of Today

Seventy people out of every one hundred have defective eyesight. And this is not because eyes are being made "poorer" than they were in grandfather's day either.

Our present mode of living, with confining work, insufficient exercise and too many hours spent with artificial lights throws a load on the eyes which they were never intended to carry. As a result, more and more people need the comforting help of glasses for eyes which have been overworked.

Do not put off giving your eyes the attention they deserve. It is more than likely they need it NOW.

A. E. WINANS & SON

OPTOMETRISTS

CHELSEA, MICHIGAN

OBSERVATIONS

Methodist Home

The severe cold weather of the past few days and the indisposition that has prevailed through the home lately have made news items scarce articles. The number of visitors has been of a negligible quantity. These times try the local scribe's imagination to make an interesting paper out of a blank space. To manufacture readable news out of nothing is one of the wonders of the age.

Mr. and Mrs. Gibson of Detroit are expected to join the family circle next week. They will occupy the large room on the third floor.

Mrs. Balmer laid down the reins a couple of days last week and visited her daughter in Royal Oak. The daughter, Mrs. T. B. Gilliam, returned with her and spent the week-end here.

Mr. and Mrs. E. R. Reed spent holiday week with relatives in Detroit and Saginaw. They returned Saturday of that week, bringing with them the unwelcome flu and have been trying to nurse themselves back into health again. But the invisible and unaccountable germ holds them in its grip yet.

Mrs. Kelsey and Edna Kelsey, also Mrs. E. P. Conners and Mary Conners of Ann Arbor, were recent visitors at the home.

Miss Alice Bird of Detroit, called on friends in the home last week.

Mrs. W. J. Balmer attended the monthly meeting of the Board of Managers in Detroit last week.

Miss Ruth Wilson of Ypsilanti spent some time with her mother, Mrs. Minnie B. Wilson last week.

Mrs. Irene Wilcox entertained her sister, Mrs. Huttenlocher of Grass Lake last Sunday and Miss Ida Dettling of Lima last Friday.

Mrs. Amelia Lewis received a visit from her daughter, Mrs. Meade of Ann Arbor.

Rev. R. T. Kilpatrick and son of Wyandotte were callers at the home recently. Rev. Kilpatrick is a new

member of the Board of Managers of the home.

Miss Nellie Holmes fell recently and injured her hip which is causing her considerable pain.

Mrs. C. E. Bowen is under the doctor's care these days.

Rev. and Mrs. W. J. Balmer are planning to attend the annual convention to be held in the Congress hotel, in Chicago, February 8th and 7th, of the National Methodist hospital and the Home Association. The meetings will be addressed by Bishops Hughes and Blake in addition to other noted speakers. A grand banquet at that hotel is booked for Wednesday evening.

There are about fifty homes similar to ours in the Methodist denomination in the United States. The Chelsea Home is one of the oldest and largest in the denomination and reports show it to be among the best managed.

The efficient nurses in the home, Mrs. Abbie Tansley and Mrs. Nellie Ramford are entitled to very much credit for the untiring and constant attention they have given the many who have been sick the past month. From early in the morning until way past midnight have they stuck faithfully to their duties. They should receive words of thanks and appreciation and not censure and unkind words. The Standard man takes off his hat to them.

Soy Bean Valuable
Bakers of the soy bean claim more uses to its credit than for any other cereal or vegetable. It provides milk, flour, margarine, cheese, infant's foods, custard powder, salad oil and soy, the basis for soups, pulps, cereals, varnishes, lubricants, printing inks, celluloid, rubber substitutes and glycerine.

Hateful Prejudice
Prejudice is a glass through which we see darkly. It colors and distorts our judgments. Through it we look on our fellow men and they appear harmful. We look on the good and wonder if it is worth while.

Negro Tenor Will Be Heard In Ann Arbor

Roland Hayes, the world renowned negro tenor, will be heard in Ann Arbor for the second time when he appears in the Choral Union concert series, Friday night, January 18. Mr. Hayes is a splendid example of how one born in America may rise from the most humble circumstances to the loftiest type. He was born in the Southland, a son of a former slave mother. As a child he knew only poverty in its most wretched form. A sunny disposition, great musical talent and the determining desire to succeed combined to force him ever onward and upward. Through almost



ROLAND HAYES

uncanny combination of circumstances, he matured the rudiments of an education and grew up by reason of his beautiful voice. He made his way to a Southern college where he covered his expenses by singing and engaging in all sorts of labor. Finally his past became a bit easier. He attracted the attention of the discriminating musicians and eventually suddenly was transferred to the great conservatory of Europe and this country. He is a refined gentleman of gentility and idealism. Ever striving for his heart and for the uplift of his race.

The general public is urgently but respectfully requested to come sufficiently early in order to be seated when the concert begins, in order to avoid confusion and unnecessary distraction. Holders of season tickets need not respectfully request to detach from the season tickets before leaving home, coupon for the individual concert and present it only for admission rather than presenting the whole ticket.

The Installment Age

All the morning the teacher had been trying to teach her very small pupils the mysteries of simple addition.

One small boy seemed far behind the others in grasping even the simplest of ideas and with him the harassed teacher spent quite a lot of time.

"Look here, Leonard," she began for the fifth time. "Let's suppose your father saves \$5 every week for your pocket money. What will he have at the end of that time?"

Leonard had his answer ready. "A hundred dollars," he said, "because he would have \$5 a week for 20 weeks."

Wife "Raices" Husband

While one wife is supposed to be raising of their own husbands in China, according to Capper's Weekly, it is not uncommon, says the paper, for a Chinese boy of twelve to be married to a woman of twenty or twenty-five. I suppose she is isolated by the "Raices" mother, when then uses her daughter-in-law for a household use. If her husband's mother dies, she will then assist her father-in-law in bringing up the boy, then way that it turns him into a model husband.

Growth of Trees

"How fast you set up at Christmas time and decorate with all sorts of ornaments, takes from six to ten years to grow, according to the American Tree association. Norway spruce, white spruce and balsam fir are best for this purpose. The best trees for indoors, the least and oak, not grown from twelve to twenty years. Twenty-five to thirty years are required to produce telegraph and telephone poles. Popular Science Monthly.

At Home

At the supper table a discussion was brought up about a neighbor who had been in a week. It had not been the neighbor's fault, but he found out that he would have to pay for having his car fixed.

The older son exclaimed: "But, father, Mrs. G. is up in the air about it. 'Oh, no,' she spoke up five-year-old Charlotte, 'she's at home!'"

Master's License

Joseph Conrad's knowledge of English, literary and colloquial, need not here be praised. But there were, certainly words which he so to speak, declined to learn. One very old English word was the word "wowed." He used the "w" and "o" sounds, so but it became "wowed." I have been old that up would even write it so. He pronounced "used" as two syllables something like "ush."—London Morning Post.

Read Standard Liners.

ALONG LIFE'S TRAIL

By THOMAS ARKLE CLARK
Dean of Men University of Illinois

READING AND CHARACTER

He was twelve, perhaps, sitting all humped up upon the floor in one corner of the office, reading the evening news, his bag of undelivered papers on the floor beside him.

"What are you reading?" I asked, knowing that nothing ordinary would keep him so engrossed.

"Dickens," was the only word he uttered.

"Interesting?" I inquired.

"I say so," he answered, and kept on with the reading.

I knew very well what was holding his childish attention. His young mind was concerning itself with the sordid details of the trial of the "Fox," which was at that time holding the front page of practically every newspaper in the country. It was a crime so brutal, so horrible, so repulsive that I could not bring myself to read about it. My chief interest was that the unhappy perpetrator should be put away as soon as possible, and as justice should decide, and that we should be permitted to forget the horror of it all.

The boy was not a twelve-year-old child, but a young man whose mind was so engrossed with the lurid picture of the crime, that he could not go on with his evening task. It was to me pitiful.

What is the effect upon childish immature minds of the stories of youthful crime? It cannot be good. The impressions and the influences which come to a child between the ages of twelve and eighteen are the most lasting impressions.

The details of crime are what the people want, the news editor says, and if the paper is to succeed, that is what they must be given. I wonder, however, if it is necessary to broadcast the horrors of crime all over the front page, to center the attention upon them by the use of heavy-faced streamers, and photographic representations of the most revolting scenes connected with these crimes.

When Mrs. Snyder was electrocuted the details of her execution were so minute as almost to take one into her presence to see her agony, and to hear her moans. Such reading is bad enough for adults whom experience has hardened, but for children!

(© 1929, Western Newspaper Union.)



The KITCHEN CABINET

If you four eyes would keep from peering at me, I'll give you five things I keep weekly hid: Myself and I and mine and my. And what I said and did.

—Anon.

THINGS YOU WILL ENJOY

Had it such a general favorite that it is considered a choice dish when nicely cooked.

H. M. Baked With Pineapple.

Take a duck cut of ham from the center, remove any surplus fat and soak in cold water for an hour, drain and simmer five minutes in a boiling dish in a hot oven to brown. After it has cooked about ten minutes arrange around it quarters of sliced pineapple and allow them to brown in the fat. When the ham is cooked pour over it one-half cupful of water; cook for five minutes slowly and serve the ham on a hot platter garnished with the pineapple and the sauce poured over all. Garnish with water cress or parsley.

Mock Duck.—Take two large pork tenderloins and split them, then flatten with a cleaver. Prepare a filling of one cupful of soft bread crumbs, one tablespoonful of melted butter, one-fourth pound of well finely chopped onion, half teaspoonful of salt and one-quarter teaspoonful of pepper and marjoram, with a onion to taste. Place the filling on one tenderloin, cover with the other and sew them together securely. Arrange strips of salt pork over the top of the duck, or hard them in with a needle. Place in a hot oven to bake, turning well then, lower the heat, Peel, core and quarter "apples" and apples which will keep their shape, set over the heat with a little water in a saucepan, sprinkle with sugar a tablespoonful for each apple and generous bits of butter, close the dish and bake in a hot oven where they may steam and cook until semitransparent. Serve as a garnish about the duck.

Save some cooked turnip and raspberry juice to add to large ripe cherries and make a most delightful conserve. The three flavors are especially attractive together. Add sugar and cook as any conserve, put into glasses and seal with paraffin.

Neene Maxwell

NOTTEN ROAD

Rev. Fred Ross was in Detroit on Thursday and Friday where he was in attendance at a ministers' meeting.

Miss Ricka Kalmbach has been on the sick list for the past few days.

Dorr Whitaker was in Ann Arbor Sunday.

The Grange was postponed for one week owing to the severe weather conditions.

Word has been received that Mrs. Wm. Eckard of Watts, California, passed away after an illness of some time. Mrs. Eckard was a sister of Miss Martha Riemenschneider and will be well remembered by the older residents here. The Eckards have been residents of California since 1881.

Mrs. Lina Whitaker was in Ann Arbor Thursday and Friday of last week.

FLETCHER ROAD

Mr. and Mrs. J. Bishop of Detroit spent Sunday with Mr. and Mrs. Geo. Nordman.

J. Frank MacMillan is under the doctor's treatment for a very sore hand.

Mrs. John Chupp has given an order for a new model of the Chevrolet car. Norman Wacker has the order. Arthur and Lawrence Wacker are cutting ice.

Mrs. John Chupp is confined to the house with flu.

Miss Vera Davison, daughter of Mr. and Mrs. Monte Davison, is in the U. of M. hospital with pleurisy. Miss Davison is a nurse in the hospital.

Vigilant Law Officer Had Seen 'Em Doing It

Speeding across the country from Los Angeles to New York by motor, two motion-picture celebrities were held up by the constable in a small town and, as usual, the officer had all the advantage on his side. He refused to give them a ticket and finally compromised by taking them directly before the judge.

The constable was very hot under the collar and declared he would make it hot for them, but the couple were hardly prepared for the outraged officer's charge in court.

"Your honor," he announced pompously, "this is a couple of motion-picture people and the charge I'm preferring against them is arson."

"Arson?" roared one of the accused. "What do you mean? We were never out of our car till you flagged us!"

"You was burnin' up the road, an' I'm preferin' the charge of arson against you," insisted the constable, and even the court had to laugh as he let them off with a five dollar fine.

REPORT OF THE CONDITION OF The Kempf Commercial and Savings Bank

At Chelsea, Michigan, at the close of business, Dec. 31, 1928, as called for by the Commissioner of the Banking Department.

Resources \$241,051.86
Loans and Discounts 1,536.00
Items in Transit \$128,954.82
Secured by Collateral \$242,587.86 \$128,954.82 \$366,542.68
Totals \$30,821.18 \$209,926.13 \$240,747.31

Real Estate Mortgages \$18,700.00
Bonds and Securities, viz.:
a Municipal Bonds in Office 162,782.50
b Other Bonds \$181,462.50 \$181,462.50

Reserves, viz.:
Due from Federal Reserve Bank \$42,714.47
Cash and Due from Banks in Reserve \$42,931.00
U. S. Bonds and Certificates of Indebtedness carried as legal reserve in Savings Dept. only \$85,645.47
Exchanges for Clearing House

Total Cash on Hand \$- 125.46
Combined Accounts, viz.:
Overdrafts 10,000.00
Banking House 900.00

Furniture and Fixtures 15,950.00
Customers' Bonds Deposited with Bank for Safekeeping 3,000.00
Stock of Federal Reserve Bank \$904,373.42

Capital Stock paid in \$60,000.00
Surplus Fund 40,000.00
Undivided Profits, net 1,465.49
Dividends Unpaid 2.00

Commercial Deposits Subject to Check \$224,118.04
Certified Checks 18,779.57
Cashier's Checks 10,050.04
U. S. Government Deposits \$253,949.56

Savings Deposits, viz.:
Book Accounts—Subject to Savings By-Laws \$467,904.47
Certificates of Deposit—Subject to Savings By-Laws 25,305.13

Totals \$493,209.56
Notes and Bills Rediscounted None
Bills Payable None
Bonds Sold Subject to repurchase None
Customers' Bonds Deposited with Bank for Safekeeping \$904,373.42

State of Michigan, County of Washtenaw, ss.
I, John L. Fletcher, Vice President of the above named bank do solemnly swear, that the above statement is true to the best of my knowledge and belief and correctly represents the true state of the several matters therein contained, as shown by the books of the bank.

JOHN L. FLETCHER, Vice President.
Subscribed and sworn to before me this 7th day of January, 1929.
C. J. Mayer, Notary Public.
My commission expires March 27, 1929.

Correct Attest:
Lewis P. Vogel
C. J. Chandler
L. G. Palmer Directors

Most People
Every man has to struggle for himself, but most persons give a bit of help where they can.—D. H. Lawrence.

One Terror Removed
A Louisiana man with rather tender joints has constructed a rocking chair which he holds up and shoves under the bed when he retires.—Louisville Times

Citizen and State
In dealing with the state we ought to remember that its institutions are not aboriginal, though they existed before we were born; that they are not superior to the citizen; that every one of them was once the act of a single man; every law and usage was a man's exudation to meet a particular case; that they all are mutable; all alterable; we may make as good we may make better.—Emerson.



The Outstanding Chevrolet of Chevrolet History

—a Six in the price-range of the four!

represents 4 years of Development and over a Million miles of Testing

Years ago, the Chevrolet Motor Company designed and built its first experimental six-cylinder motor. This far-sighted step was taken because Chevrolet engineers knew that the six-cylinder motor is inherently the most perfectly balanced motor—the ideal power plant to meet the growing public demand for greater reserve power, faster get-away and, above all—smooth, quiet performance.

During the last four years, over a hundred six-cylinder motors were built by Chevrolet engineers and tested on the General Motors Proving Ground.

Day and night, through winter's cold and summer's heat, the incessant testing went on—until the present motor was developed and finally pronounced correct.

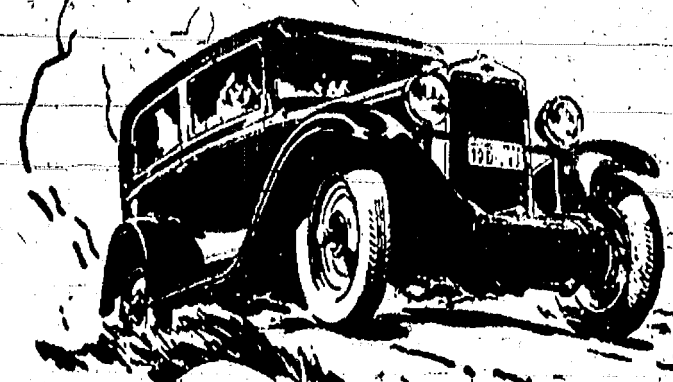
At the same time other Chevrolet engineers were perfecting other parts of the chassis. And another great automotive organization—the Fisher Body Corporation—was devoting its gigantic resources to the creation of the finest, sturdiest and most beautiful bodies ever offered on a low-priced automobile.

As a result, the Outstanding Chevrolet offers an

order of well-balanced excellence—a combination of performance, comfort, beauty and handling ease that is truly remarkable—with a fuel-economy of better than 20 miles to the gallon of gasoline.

You owe it to yourself to see and inspect this remarkable car. Come in today!

The COACH \$595	
The Roadster.....	\$525
The Sedan.....	\$525
The Coupe.....	\$595
The Sedan.....	\$675
The Sport.....	\$695
The Cabriolet.....	\$725
The Convertible.....	\$725
Light Delivery.....	\$595
Chassis.....	\$400
1 1/2 Ton Chassis.....	\$545
1 1/2 Ton Chassis with Cab.....	\$650
All prices f.o.b. Plant, Michigan	



SYLVAN CHEVROLET SALES & SERVICE

Phone 47

Incorporated

Chelsea, Mich.

QUALITY AT LOW COST

The Wardrobe Tailor Shop

EDWARD KRUG, Prop.
Boys' Clothing Like Dads

HIGH CLASS CUSTOM TAILORING

Special made-to-measure boys' and young men's two pants school suits. Sizes 6-15. Single or double breasted coat, vest like dad's.

Choice of—A. Two golf pants—B. One golf and one long—C. Two long pants. Youths' suits, sizes 13-20. Style of coat, single or double breasted.

\$9.95 and \$11.95

207 E. Huron St.

Ann Arbor, Mich.

If You Have A Boy Who Is Hard To Fit
We Can Make A Suit That Will Fit Him

Think It Over
"Money doesn't mean happiness."
But did you ever find much joy in a
home for the poor?—*Forbes Magazine.*

STEAM PERMANENT WAVES
\$8.50
Beauty Culture of All Kinds.
Marcel and Finger Waves, 50c
Manicuring — Facial Massage.
Scalp Treatments
Rainwater Shampoo

VERA RICHARDS
BEAUTY SHOPPE
Phone 336, Chelsea

SYLVAN TAXPAYERS
I will be at the Kempf Commercial
& Savings Bank all day and in the
evening, every Saturday during the
month of January to receive the taxes
for the year 1933.
Your dog tax is due and should be
paid at this time.
E. B. HAMMOND,
Treasurer.
1742
Southern Pulchritude
"Clothes," says a meretricious ad in
a New York paper, "make the college
girl." Maybe so up there, but here
our lovely, fresh, smiling young col-
lege girls make the clothes—Colum-
bus (N. C.) State.

Twenty-four Years Ago

Thursday, January 19, 1905.
Hon. M. J. Noyes sent thirty sam-
ples of wool from his registered flock
of sheep on his farm in Sylvan, to St.
Louis exposition and was awarded the
prize. His registered sheep are Black
Top Delane Marino.
Adam Eppler has just completed a
large ice house on his premises and is
having it filled with ice for use in his
market.
O. C. Burkhardt is having a large
barn built on his premises on Jeffers-
on street that will be used by the
firm Burkhardt & Kresman in their
buying and selling horses. These gen-
tlemen have enjoyed a good business
for some months past and their motto
is "no money down until the animals
have proven satisfactory in every re-
spect."

R. B. Waltrous has been in northern
Michigan where he purchased a num-
ber of general purpose horses and on
Saturday he will have a carload here
and will hold a sale in the VanTine
building on Park street.

Cards are out announcing the mar-
riage of Miss Addie Scouten and Mr.
Michael Heselischwerdt which will take
place at the home of the bride's par-
ents on January 19, in Sylvan Center.

Harold Pierce of Chelsea has a col-
lection of postage stamps that num-
bers nearly two thousand. Every
country in the world that uses stamps
is represented in the collection.

The Chelsea Lumber & Produce Co.
has handled 25,000 bushels of onions
so far this season.

Mr. and Mrs. J. M. Woods left for
Detroit yesterday where Mr. Woods
has accepted a position as janitor of
the Blodgett Terrace which is owned
by P. F. Glazier.

Frank and Merchant Brooks of this
place left Wednesday for River Rouge
where they attended the funeral of
their sister.

Wednesday evening someone tried
to gain entrance through the cellar at
the home of Mr. and Mrs. George P.
Staflon on South street.

NORTH FRANCISCO

Due to severe weather and sick-
ness there has not been much news
in this vicinity.

Miss Thelma Loveland who has been
unable to teach for the reason that
she has been sick, took up her work
at the Sylvan school Monday morning.

Mrs. Erie Notten has been confined
to her bed for a couple of weeks but
is able to be about the house at pre-
sent.

Earl Kalmbach and lady friend called
at the home of Mr. and Mrs. Ches-
ter Notten Sunday.

Miss Mable Notten is spending a
few days with her sister, Mrs. Ezra
Heininger.

Miss Marcia Boone spent the week-
end with Miss Fern Fauser.

Mr. and Mrs. Clarence Lehman and
daughter were Sunday guests of Mr.
and Mrs. Arthur Wall.

Mr. and Mrs. John Miller who have
been on the sick list are able to be
about again.

Mrs. Florence Fauser called on Mrs.
Erie Notten Friday.

Mr. and Mrs. Herbert Harvey were
at Roots Station Wednesday where
they visited Mr. Harvey's sister, Mrs.
Anna Main.

The thermometer is hovering around
zero at present, considerable sickness
and not much travel.

Unsafe for Husband
One husband declares in the Amer-
ican Magazine that the most malig-
nant invention of the modern day is the
one which has made the world unsafe
for husbands, the invention being re-
tail credit.

PENN'S BODY FOUND BURIED IN ENGLAND

**Pennsylvania Man Wants It
Removed to America.**

Meadeville, Pa.—Near a lonely by-
way in rural England, unmarked save
for a small stone, lies the body of Wil-
liam Penn, founder of the state of
Pennsylvania.

The Quaker leader's burial plot,
shadowed by mighty trees and sur-
rounded by an old fence, was discov-
ered last summer by Arthur L. Bates,
former representative from Pennsyl-
vania, who toured Europe with his
family.

Bates has started a movement to
have Penn's body removed to Pennsylv-
ania and a suitable monument erected
to mark his grave.

He says Penn's grave, near an im-
proved dirt road 18 miles from Lon-
don, is in danger of being entirely for-
gotten. The lettering on the tomb-
stone, he says, is almost illegible.

The burial plot, which, Bates re-
ports, appears to be a private one, also
contains the bodies of Penn's two
wives, Gullelma and Hannah, and
their children.

The former congressman suggests
that the condition of the state found-
er's resting place be called to the at-
tention of Governor Fisher of Pennsylv-
ania in the hope that he may recom-
mend to the legislature the appoint-
ment of a commission to negotiate
with British authorities concerning re-
moval of the body.

Should officials of Great Britain re-
fuse consent to removal of the body,
Mr. Bates suggests permission be ob-
tained to erect a monument on the
present grave.

Penn acquired what is now Pennsylv-
ania—48,000 square miles fronting on
the Delaware river—through a grant
of King Charles II, to square a debt
owed by the monarch to Penn's fa-
ther.

Accompanied by 100 English Quak-
ers, Penn arrived at his tract in 1682
and laid out the city of Philadelphia.

After watching his territory develop
Penn returned to England, where he
died in 1718. His title to the state
was apparently good, for as late as
1790 the property rights of his de-
scendants were acquired by the Amer-
ican congress for \$650,000.

Study Seeks to Clear Mystery in Cell Life

New Haven, Conn.—Seeking to learn
more about fundamentals of the prin-
ciples and the evolution of life, re-
search is under way in Osborn Zoolo-
gical laboratory here into the puzzling
ability of a one-cell animal to recon-
struct itself every 25 or 30 days.

The animal is the paramecium and
the research is under direction of Dr.
Lorande L. Woodruff, professor of
protozoology.

The unusual factor in the periodic
renewal is that it occurs without mat-
ing or fertilization, which is the or-
dinary way of cell life rejuvenation.
Each renewal is accompanied by in-
crease in vigor of the animal.

The application of such research
lies in the fact that anything which
helps explain the life of single cells
may lead to knowledge that can be
used ultimately for the direct benefit
of mankind, because the human body
is a structure of countless separate,
co-ordinated cells.

Savant Gets \$10,000 to Relieve His Poverty

London.—The Daily Mail says that
it has learned that the poverty of a
man who has given his life to combat-
ing malaria has been relieved by the
purchase of his papers for \$10,000 by
Lady Houston, wealthy widow of Sir
Robert Houston.

Sir Ronald Ross, 30 years ago was
one of the men who discovered that
malaria is carried by mosquitoes. This
discovery led to eradication of the
fever which was endangering the com-
pletion of the Panama canal. He was
given his title, but no other public
reward.

Now at the age of seventy-one, seri-
ously ill and with the use of one arm
gone, he has been living close to want
in a tiny flat here. He offered the
papers and books of his lifetime of
study for sale to relieve his distress.

Silver Fox Strays Into Montreal and Is Caught

Montreal, Quebec.—A silver fox
strayed into the streets of Ahuntsic, a
suburb of Montreal, and was captured
by a policeman, who led the animal to
the station as one would lead a dog.

The fox is valued at \$500. Shortly
afterward it was resting contentedly
in a box at the police station. There
are several fox ranches on Montreal
island, not far from Ahuntsic.

Money Circulation Off to \$40.46 a Person

Washington.—In the United
States on October 31 there was
\$4,907,736,465 in money in circula-
tion, or \$40.46 per capita of the
estimated population of 118,
889,000 the country had on that
date. The figures were an-
nounced by the treasury.

The circulation statement
showed a steady fall in the per
capita currency circulation since
October, 1920, on which date it
amounted to \$53.01 a person.
Last year during October the
per capita circulation was \$42.12.

Thirty-four Years Ago

Thursday, January 17, 1895.

At the annual meeting of the Wash-
tenaw Mutual Fire Insurance Co. on
Wednesday, January 9, in Ann Arbor,
A. W. Chapman, of Sylvan was elect-
ed as one of the auditors of the com-
pany.

The republicans of Washtenaw coun-
ty will meet at the court house in Ann
Arbor on Tuesday, February 12, for
the purpose of choosing 21 delegates
to attend the state convention in De-
troit on February 22, and also to nomi-
nate a candidate for the office of
county school commissioner. Sylvan
is entitled to 12 delegates.

Miss Adah Prudden has resigned her
position in the Chelsea public
schools and has gone to St. Joseph
where she has accepted a position.
Miss Florence Carpenter, of Kalama-
zoo, has been engaged to fill the va-
cancy in the corps of teachers caused
by the resignation of Miss Prudden.

The Glazier Stove Co. has received
and placed in position two large
stamping presses weighing ten tons
which they will use in the manufacture
of oil stoves.

Willis VanRiper, son of Mr. and
Mrs. John VanRiper died at the home
of his parents Tuesday, January
15. He was born in Dexter, January
6, 1865. The funeral was held in the
Baptist church at 10:30 today, Rev.
Wm. Walker conducting the service.

Jacob Hummel had the misfortune
to step on a rusty nail a few days ago,
and as a result he is nursing a very
sore foot. In the future watch your
step, Jacob.

Use Snakes as "Mousers"
Many Havana storekeepers use
snakes of the boa species instead of
cats as "mousers."

What's Your Home Worth?

And your business? Are you
sure you are fully protected in
case of loss by fire, theft or
other misfortune?

If there's any question about it,
better to see to it NOW than
put it off until too late.

We will gladly advise you about
all forms of dependable insur-
ance protection.

H. W. SCHENK
Dependable Insurance
Chelsea, Mich.

The New BUICK

All that is Newest..in
Style & Performance
..plus the reliability
that makes BUICK
Supreme

Here are bodies of matchless distinction and charm
... Here is the highest development of the famous
Buick Valve-in-Head engine—the most powerful
engine of its size in the world.

And here are new heights of that sterling reliability
for which Buick has always been famous—a remark-
able new chassis—assuring thousands upon thou-
sands of miles of complete motoring satisfaction.

For the newest in style and performance—for utmost
value—for the highest degree of stamina and reli-
ability—the choice of the overwhelming majority of
fine car buyers is this magnificent new Buick.

Coupes ..\$1195 to \$1875
Sedans ...\$1220 to \$2145
Sport Cars \$1225 to \$1550

These prices f.o.b. Buick Fac-
tory. Convenient terms can be
arranged on the liberal G. M.
A. C. Time Payment Plan.

When better automobiles are built... BUICK WILL BUILD THEM

WHEN BETTER AUTOMOBILES ARE BUILT... BUICK WILL BUILD THEM

WHEN BETTER AUTOMOBILES ARE BUILT... BUICK WILL BUILD THEM

WHEN BETTER AUTOMOBILES ARE BUILT... BUICK WILL BUILD THEM

WHEN BETTER AUTOMOBILES ARE BUILT... BUICK WILL BUILD THEM

WHEN BETTER AUTOMOBILES ARE BUILT... BUICK WILL BUILD THEM

WHEN BETTER AUTOMOBILES ARE BUILT... BUICK WILL BUILD THEM

WHEN BETTER AUTOMOBILES ARE BUILT... BUICK WILL BUILD THEM

WHEN BETTER AUTOMOBILES ARE BUILT... BUICK WILL BUILD THEM

WHEN BETTER AUTOMOBILES ARE BUILT... BUICK WILL BUILD THEM

WHEN BETTER AUTOMOBILES ARE BUILT... BUICK WILL BUILD THEM

WHEN BETTER AUTOMOBILES ARE BUILT... BUICK WILL BUILD THEM

WHEN BETTER AUTOMOBILES ARE BUILT... BUICK WILL BUILD THEM

WHEN BETTER AUTOMOBILES ARE BUILT... BUICK WILL BUILD THEM

WHEN BETTER AUTOMOBILES ARE BUILT... BUICK WILL BUILD THEM

WHEN BETTER AUTOMOBILES ARE BUILT... BUICK WILL BUILD THEM

WHEN BETTER AUTOMOBILES ARE BUILT... BUICK WILL BUILD THEM

WHEN BETTER AUTOMOBILES ARE BUILT... BUICK WILL BUILD THEM

WHEN BETTER AUTOMOBILES ARE BUILT... BUICK WILL BUILD THEM

WHEN BETTER AUTOMOBILES ARE BUILT... BUICK WILL BUILD THEM

WHEN BETTER AUTOMOBILES ARE BUILT... BUICK WILL BUILD THEM

WHEN BETTER AUTOMOBILES ARE BUILT... BUICK WILL BUILD THEM

WHEN BETTER AUTOMOBILES ARE BUILT... BUICK WILL BUILD THEM

WHEN BETTER AUTOMOBILES ARE BUILT... BUICK WILL BUILD THEM

WHEN BETTER AUTOMOBILES ARE BUILT... BUICK WILL BUILD THEM

WHEN BETTER AUTOMOBILES ARE BUILT... BUICK WILL BUILD THEM

WHEN BETTER AUTOMOBILES ARE BUILT... BUICK WILL BUILD THEM

WHEN BETTER AUTOMOBILES ARE BUILT... BUICK WILL BUILD THEM

Cheddar as Staple

Cheese is regarded as the staple
food in many countries because of its
high nutritive value. It is especially
rich in vitamin A. In Switzerland it
is consumed almost universally be-
cause of its protein content, which
exceeds the protein of average meat
and is twice that of eggs. Its calory
value is greater than that of any other
food, except perhaps nuts, butter, oil
and very fat meats.

Famed for Eloquence
Toward the end of his notable career
of 37 years in the senate the late
George Frisbie Hoar of Massachusetts
was frequently called by the title
"old man eloquent" of the senate.

Upholstering
Davenport and Chairs
made to order. Chairs re-
modeled.
Full line of samples on
hand.
Shop at residence — 310
South Street. Phone 188.
**J. F. HIEBER
& SON**
Read Standard Liners.

For Sale—40 Ac., Equipped

West of Saline, just off U. S. 112. All stock and tools included.
Level, black loam soil. Very productive of hay, grain, potatoes,
and garden truck of all kinds. Newly remodeled home of 6
rooms, bath, poultry house, silo, garage. A good well and a
never failing spring. 2 dandy horses, 4 good milk cows, 8 heif-
ers, 150 bu. oats, 150 corn, 15 tons hay, Fordson tractor, plows,
silo filler, and all other farm tools. \$6500. Terms.

THE POMMERENING LAND CO.
FARM SPECIALISTS
601-6 First National Bank Bldg.
Ann Arbor, Michigan Phone 3113

Electric Supplies

Give your wife an "electric servant"—to save her
time, to save her steps. At practically no cost after
the initial outlay, electricity is ready to help in all the
housework—and do it better than by old-fashioned
ways.

Electric Toasters Electric Popcorn Poppers
Electric Flat Irons Electric Percolators
Electric Sweepers Electric Grills
Electric Stoves Electric Refrigerators

Electric Washers
JUST RECEIVED—A nice lot of table lamps.

Chelsea Light & Water Department

Give your wife an "electric servant"—to save her
time, to save her steps. At practically no cost after
the initial outlay, electricity is ready to help in all the
housework—and do it better than by old-fashioned
ways.

Electric Toasters Electric Popcorn Poppers
Electric Flat Irons Electric Percolators
Electric Sweepers Electric Grills
Electric Stoves Electric Refrigerators

Electric Washers
JUST RECEIVED—A nice lot of table lamps.

Chelsea Light & Water Department

Give your wife an "electric servant"—to save her
time, to save her steps. At practically no cost after
the initial outlay, electricity is ready to help in all the
housework—and do it better than by old-fashioned
ways.

Electric Toasters Electric Popcorn Poppers
Electric Flat Irons Electric Percolators
Electric Sweepers Electric Grills
Electric Stoves Electric Refrigerators

Electric Washers
JUST RECEIVED—A nice lot of table lamps.

Chelsea Light & Water Department

Give your wife an "electric servant"—to save her
time, to save her steps. At practically no cost after
the initial outlay, electricity is ready to help in all the
housework—and do it better than by old-fashioned
ways.

Electric Toasters Electric Popcorn Poppers
Electric Flat Irons Electric Percolators
Electric Sweepers Electric Grills
Electric Stoves Electric Refrigerators

Electric Washers
JUST RECEIVED—A nice lot of table lamps.

Chelsea Light & Water Department

Give your wife an "electric servant"—to save her
time, to save her steps. At practically no cost after
the initial outlay, electricity is ready to help in all the
housework—and do it better than by old-fashioned
ways.

Electric Toasters Electric Popcorn Poppers
Electric Flat Irons Electric Percolators
Electric Sweepers Electric Grills
Electric Stoves Electric Refrigerators

Electric Washers
JUST RECEIVED—A nice lot of table lamps.

Chelsea Light & Water Department

Give your wife an "electric servant"—to save her
time, to save her steps. At practically no cost after
the initial outlay, electricity is ready to help in all the
housework—and do it better than by old-fashioned
ways.

Electric Toasters Electric Popcorn Poppers
Electric Flat Irons Electric Percolators
Electric Sweepers Electric Grills
Electric Stoves Electric Refrigerators

Electric Washers
JUST RECEIVED—A nice lot of table lamps.

Chelsea Light & Water Department

Give your wife an "electric servant"—to save her
time, to save her steps. At practically no cost after
the initial outlay, electricity is ready to help in all the
housework—and do it better than by old-fashioned
ways.

Electric Toasters Electric Popcorn Poppers
Electric Flat Irons Electric Percolators
Electric Sweepers Electric Grills
Electric Stoves Electric Refrigerators

Electric Washers
JUST RECEIVED—A nice lot of table lamps.

Chelsea Light & Water Department

Give your wife an "electric servant"—to save her
time, to save her steps. At practically no cost after
the initial outlay, electricity is ready to help in all the
housework—and do it better than by old-fashioned
ways.

Electric Toasters Electric Popcorn Poppers
Electric Flat Irons Electric Percolators
Electric Sweepers Electric Grills
Electric Stoves Electric Refrigerators

Electric Washers
JUST RECEIVED—A nice lot of table lamps.

Chelsea Light & Water Department

Give your wife an "electric servant"—to save her
time, to save her steps. At practically no cost after
the initial outlay, electricity is ready to help in all the
housework—and do it better than by old-fashioned
ways.

Electric Toasters Electric Popcorn Poppers
Electric Flat Irons Electric Percolators
Electric Sweepers Electric Grills
Electric Stoves Electric Refrigerators

Electric Washers
JUST RECEIVED—A nice lot of table lamps.

Chelsea Light & Water Department

Give your wife an "electric servant"—to save her
time, to save her steps. At practically no cost after
the initial outlay, electricity is ready to help in all the
housework—and do it better than by old-fashioned
ways.

Electric Toasters Electric Popcorn Poppers
Electric Flat Irons Electric Percolators
Electric Sweepers Electric Grills
Electric Stoves Electric Refrigerators

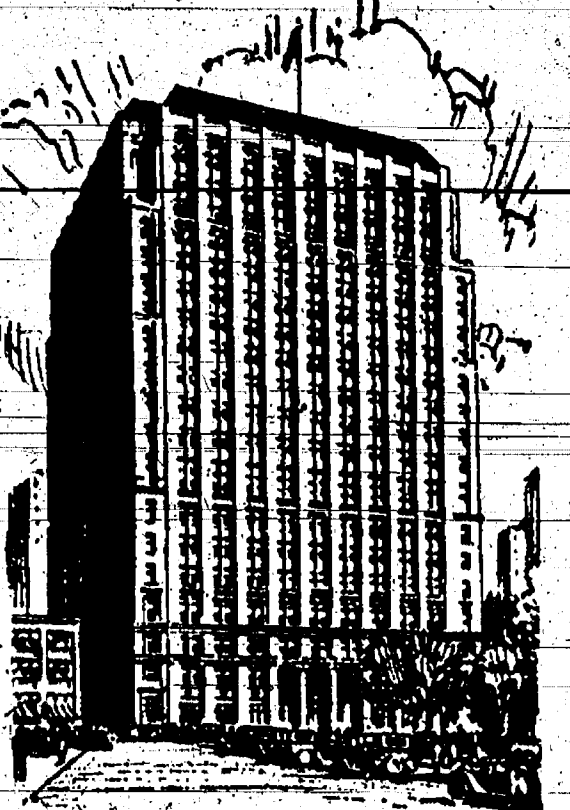
Electric Washers
JUST RECEIVED—A nice lot of table lamps.

Chelsea Light & Water Department

Give your wife an "electric servant"—to save her
time, to save her steps. At practically no cost after
the initial outlay, electricity is ready to help in all the
housework—and do it better than by old-fashioned
ways.

"Say It with Flowers"
FLOWERS FOR ALL OCCASIONS
Cut Flowers Plants
Funeral Pieces
Boquets for Special Occasions
Flowers Delivered Everywhere by
Telegraph.
Chelsea Greenhouses
ELVIRA CLARK-VISEL

Telephone Progress



The year 1932 has been one of outstanding tele-
phone development and progress. During the past
year expansion of telephone facilities of Michigan
commanded the expenditure of more than \$25,000,000.
During 1932 it is planned to expend upwards of
\$26,500,000.

The expansion program for the five years ending
December 31, 1933, contemplates the expenditure of
approximately \$136,000,000.

This program is in line with our policy which is:
To continue to furnish the best possible tele-
phone service at the lowest cost consistent
with financial safety

**MICHIGAN BELL
TELEPHONE CO.**

Pile Up Dollars By Saving

When one starts a systematic method of saving, dollars
DO pile up surprisingly. But it's essential that you get
a real start—and such a start can be made with this
strong Bank.

This plan is quite simple. Each and every week as
regular as the paydays roll around—put aside a certain
percentage of your income and deposit it here.

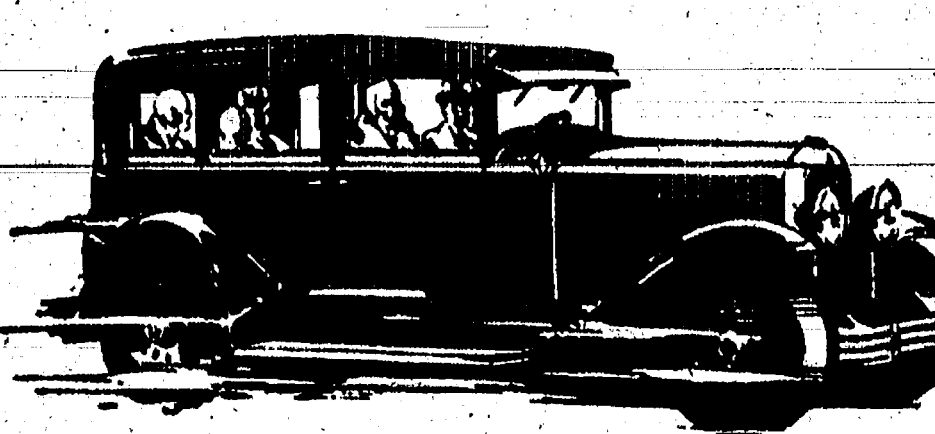
With your money collecting interest, compounded semi-
annually, you'll be amazed how it accumulates in a short
time—and incidentally gives you a start on the road to
independence.

Loans, discounts, collections, exchange, letters of credit,
interest on deposits, advice on business and investment
matters—these are some of the features of our service.

The Kempf Commercial & Savings Bank
Member Federal Reserve System
Founded in 1876
Capital, Surplus and Profits \$140,000
Chelsea, Mich.

**Money Circulation Off
to \$40.46 a Person**
Washington.—In the United
States on October 31 there was
\$4,907,736,465 in money in circula-
tion, or \$40.46 per capita of the
estimated population of 118,
889,000 the country had on that
date. The figures were an-
nounced by the treasury.
The circulation statement
showed a steady fall in the per
capita currency circulation since
October, 1920, on which date it
amounted to \$53.01 a person.
Last year during October the
per capita circulation was \$42.12.

BUICK
WITH MASTERPIECE BODIES BY FISHER
W. R. DANIELS
CHELSEA, MICH.
WHEN BETTER AUTOMOBILES ARE BUILT... BUICK WILL BUILD THEM



BETTER TAXPAYERS
 at the Kempt Commercial Bank, Chelsea, December 20 and February 16; at Dexter Savings Bank December 19 and February 9, to pay Dexter township taxes.
 John C. Schultz,
 Twp. Treas.

W. D. MESERVA
Auctioneer
 Graduate of Reppert School
 For information call or see
C. S. MESERVA

H. E. SNYDER
 Plumbing and Heating
 Phone Store, 227-W. Residence
 Chelsea, Mich.

Cleaning & Pressing
 Cleaning and Pressing. Coats Relined or Altered. Will call and deliver.
M. J. BAXTER
 Phone 272 Chelsea, Mich.

Dr. C. C. LANE
Veterinary Surgeon
 Phone 110
 VANBUREN STREET, CHELSEA

I. H. WEISS
GENERAL TRUCKING
 Ice Delivered, Sand and Gravel and Wood for sale
 Phone 217 Chelsea

H. E. FOSTER & CO.
 Well Drilling and Plumbing
 Phone 99 Chelsea, Mich.

Choose Champion Swine Producer

C. N. Easton, of Saline, Washtenaw county, has been selected as Michigan's champion swine grower from among 31 contestants entered in the 1928 pig crop contest.
 Mr. Easton produced an average litter weight of 1,770 pounds which was 172 pounds per litter more than the average of his nearest competitor. From five sows he raised 43 pigs which, at 180 days, weighed 8,551 pounds.
 The methods used by the champion, according to animal husbandry specialists at M. S. C., are typical of those used by the most successful swine producers in the state. The pigs were farrowed early enough to reach market weight in September and were sold at \$13.80, the highest price of the season on the Detroit market.
 In order to lessen the danger of internal parasites, a new pasture was provided and each sow farrowed in an individual "A" type house. The sows were fed through the winter on corn, alfalfa, oil meal and tankage as a protein supplement, and ground oats and barley in the spring. The corn was taken out of the ration the week before farrowing and the sows were kept off feed for 48 hours after farrowing.
 The pigs were creep fed before weaning, weaned at two to two-and-one-half months of age, and brought to maturity on ground oats and corn and some wheat, with oil meal and tankage as protein supplement.

Famous Old Italian City
 The city of Pisa, Italy, was probably of Etruscan origin. It became subject to Rome in 180 B. C. At the height of its greatness, in the Twelfth century, it is thought to have had a population of 150,000. In the Sixteenth century its population had dwindled to about 5,500. It is now in a thriving condition, with a population in the commune of about 70,000.

New Pontiac Now On Display In Show Room of Local Dealer

Fulfilling advance promises of big car performance, big car appearance and big car value, the Pontiac Six, essentially a brand new car from radiator to tail lamp, went on display this week at the showrooms of Harper Sales & Service, local Oakland and Pontiac dealer.

Chassis improvements that give the car flexible performance comparable with cars in a higher price range with lines styled along entirely different lines distinguish every model in this newest General Motors line.

While only rounding out its third anniversary, the Pontiac Six enters upon its fourth year a definitely established volume leader, in which position officials of the Oakland Motor Car Company are confident it will more firmly entrench itself by reason of the extraordinary value evident in the car for 1929.

All bodies are entirely new, the line including a 2-door sedan, 4-door sedan, coupe, sport roadster with fold-down rumble seat, sport phaeton, convertible cabriolet with folding rumble seat, and a landaulet sedan. The last two types are innovations in the Pontiac line, having the appearance of custom built bodies.

Outstanding features contributing to the extraordinary performance of the new car are a longer and more powerful engine, new counter-weighted crankshaft, new harmonic balancer, new internal self-energizing brakes, new rear axle, new transmission, larger carburetor, intake manifold and valves, wider springs with new shackles self-adjusting for wear, increased valve lift, and new Hotchkiss drive.

Striking new body creations by Fisher impart to the entire line individuality and custom-like features entirely new in the Pontiac price class. From the gleaming high radiator shell to the gracefully molded rear panel, harmonious lines and brilliant chrome finished exterior hardware radiate smartness, distinction and individuality.

The shell of the radiator, narrow and built up to 35 inches in height, gives to the front the appearance of power and fleetness borne out by the performance of the car. No emblem or name plate marks the front of the radiator shell, but the familiar "Chief Pontiac" radiator cap ornament is retained. A chrome plated bar extends vertically from top to bottom of the radiator core.

Large fenders, full crowned and with a beaded edge, flare out in a graceful sweep over the smart low wheels. A forged fender tie rod replaces the pressed steel rod and lamp support formerly used. Headlamps on four body types come in full chrome plate, while on the remaining models the rims are chrome plated.

A full side view shows to best advantage the original lines of the new car. The slightly arched window design, with new paneling effect between the windows; a high waist line, and unique new concave moulding distinguish the Fisher bodies. This new belt moulding starts at the cowl and completely encircles the body. It is not continued down the hood, as in the Oakland models, but a new curved pillar line, quite similar in appearance to one of America's costliest cars, runs from the center panel on the cowl down to the rear of the hood.

A smart new louvre grouping sets the car instantly apart in traffic. Instead of in the conventional manner, all are grouped in one panel and extend horizontally across the hood.

A slender and brilliantly finished cowl band with parking lamps adds to the exterior beauty of appearance. All closed bodies have adjustable drivers seats, smart new sun visor, slender ebony finish 17-inch steering wheel, ebony finish instrument panel illuminated by two hooded bulbs, Delco-Remy combination transmission and ignition lock on dash, depressible beam headlamps operated by foot control, new approved combination tail light, stop light, and license support, larger Delco-Remy motor-driven horn, lighted windshield cleaner, rear view mirror, theft proof door locks and exclusively designed running board mats.

Their Lifetime Duty

Many girls are brought up with the idea that the business of a good woman is to be a member of things, to keep things going and to call other women up and urge them to come, declares an experienced clubwoman in the Woman's Home Companion.

Detroit, Jackson and Chicago Railway

Chelsea Time Table
 (Revised August 21, 1928)
 Eastern Standard Time

Express Cars
 Eastbound, 7:14 a. m.
 Westbound, 7:09 a. m.
 Eastbound, 10:49 p. m.
 Westbound, 11:04 p. m.
 Eastbound, 4:12 p. m.
 Westbound, 6:44 p. m.
Limited Trains
 To Detroit, 8:49 a. m. and every 2 hours to 3:49 p. m.
 To Jackson, 9:04 a. m. and every 2 hours to 9:04 p. m.
 Take advantage of the round trip tickets, by buying from station agent, 10 per cent discount.
 Fare 1-1-2 round trip on Tuesday, Wednesday, Thursday and Friday.

Outline Activities For Farmers' Week

With the completion of the preliminary arrangements for Farmers' Week, February 4 to 8 at Michigan State College, activities for each day have been outlined by the committee in charge. Monday will be dairy day, with meetings of all of the breed associations and the testers for the herd improvement associations. The college band, chorus, glee club and solo artists will be featured in a special program of music Monday night with the music department in charge.

Breeders and feeders associations will hold their group meetings Tuesday and Wednesday. Tuesday will be banquet night for crops and livestock associations, farm women, and farmers' clubs.

The Michigan State Farm Bureau, Master Farmers, muck farmers and others will hold special programs Thursday in addition to the general meeting in the afternoon, and there will be a special feature program in the evening.

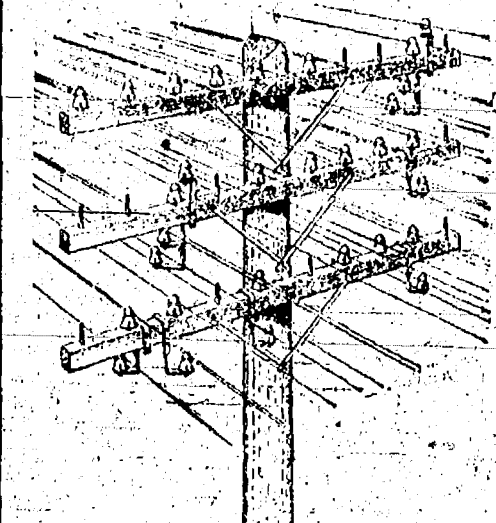
The Grange singing contest and dramatic contest will be held Friday, and group meetings will be completed.

Each of the departments of the agricultural division of the college is arranging for conference hours Tuesday, Wednesday and Thursday. At this time, special personnel problems may be discussed with college specialists.

Same Fix

He was too young to be in school. He seemed very lonesome since his playmates were gone. While he sat with his head bowed and a downcast look on his face a shaggy, dirty, little dog ran up to him whimpering. "Am doggie," called the little lad, pathetically. "I'll play w' you." Me and you are in the same fix.

TRANSPPOSITION OF WIRES IMPROVES TRANSMISSION



Transposition of Circuits on an Open-Wire Pole Line

Observant persons may notice that some telephone poles have brackets on the crossarms supporting some of the wires above or below their usual positions on the crossarms. This arrangement is important because it prevents disturbing sounds from being heard by those talking over the line.

These brackets, by specially supporting some of the wires, make it possible for them to be re-arranged on the crossarm at the next pole. The wires in this way change their relative positions at intervals along the line. They are turned over, or "transposed" in pairs or in groups of four. From this the brackets are called transposition brackets.

There are two kinds of transposition brackets, one kind carrying one wire below the crossarms, and the other kind accommodating three wires, one above and two below the crossarm.

Northeast Lyndon

Mr. J. Titus has left for East Lansing where he will take a short course at the M. S. C.

Max Kaimbach was in Detroit with a load of stock Monday.

There is quite a bit of fishing thru the ice being done on the nearby lakes.

Mr. and Mrs. Roy Hadley and family spent Saturday in Jackson.

Dick Titus of Lansing spent the week-end with his parents, Mr. and Mrs. Claude Titus.

Mr. and Mrs. Floyd Watts and daughter who have been visiting their father, H. V. Watts have returned to their home in Detroit.

The Industrial Three-in-One 4-H club met with Mr. and Mrs. Max Kaimbach on Tuesday evening. A doll making contest ensued at which Eloise Hadley received first prize. A good time was reported by all.

Roy Hadley narrowly escaped serious injury when the gas tank of the engine on which he was working exploded, causing the same to catch fire.

Automatic Reincarnation

There is no such insect as the last house fly. Kill him a thousand times and he comes back, madder than ever. —Toledo Blade.

GLORIOUS HEALTH AND LIFE ENERGY GIVEN THIS LADY

Konjola Relieved Her of Terrible Stomach Suffering.



MRS. LENA J. MARTIN

"Konjola has given me better health than I have known for more than ten years and that is why I am anxious to have others know of this remarkable medicine," said Mrs. Lena J. Martin, Route 3, Ceresco, Michigan, (near Battle Creek).

"Stomach trouble was the cause of all my misery and in spite of everything I did for relief, my condition only grew worse. Terrible pains in the pit of my stomach were getting to be more than I could stand. Sometimes my heart would palpitate so fast from the pressure of gas that I thought it would stop at any time. My whole system became weak and rundown and I was getting more discouraged all the time.

"All these symptoms began to leave after I had been taking Konjola for a few days, and from day to day, I could notice an improvement all over my system. Now I enjoy good health and new life energy and never suffer the slightest misery from stomach pains."

Konjola is sold in Chelsea, Mich. at Burg's drug store and by all the best druggists in every town throughout this section.

DEATH EVER NEAR IN MALAY JUNGLES

Tigers and elephants are found in some parts of the Malay peninsula, but not ordinarily on near-by Singapore Island. Snakes are fewer than might be expected, but they include 30-foot pythons and the krait cobra, the most poisonous of all known snakes, and the only snake which is aggressive enough to attack and pursue a man. For that matter, there are holy cobras in the Buddhist temples in Singapore itself and sometimes they escape and are captured in the jungles and gardens. Crystals of perimanganate are the usual snake bite remedy and are rubbed into the bite after it has been incised with a razor. Monkeys abound. There are some insects more than a foot long and winged, which measure a foot from butterfly to wing-tip. The biggest and ugliest of everything abroad in the jungle, along with such curiosities as crabs which eat coconuts and fish which eat coral. —New York Times.

CAMOW'S RED PEPPER CO. CAPSULES
 will prevent the "flu" if used in time.
 Sold by—
 H. H. FENN, Druggist.

E. F. BURTON
GENERAL TRUCKING
 Phone 878

Chelsea Michigan

C. H. SCHROEN
 209 So. Fourth St.
 Ann Arbor, Mich.

DR. W. S. MILLS
 Osteopathic Physician
 616 First National Bank Building
 Ann Arbor, Mich.

Real Ambition

KEEPS ONE STRIVING FOR
 "something just a little better"

No matter what your present condition may be, there's something just a little better right within your reach, and the minute your hand closes upon it, the mark goes ahead once more—YOU KEEP ON GOING ON.

AMBITION has given us the modern conveniences we enjoy today.

THINGS don't turn up

IN this world UNTIL somebody

Turns them up

Farmers & Merchants Bank

Under State and National Control



DND gasoline produces the utmost in mileage, because it burns evenly, cleanly and completely. It's the ideal fuel for high compression motors.

DND costs more per gallon, less per mile.

DND at all Staebler Stations

Stations in Washtenaw and Livingston Counties

NOTICE!

In order that the people will have a place and opportunity to see and inspect the

New Dodge Brothers Six

I have made arrangements to have these cars on display in the Steinbach building, West Middle Street, now occupied by the Chelsea Tire & Battery Shop, beginning Friday, January 11th, and until further arrangements can be made.

OPEN EVENINGS UNTIL 9 O'CLOCK

L. W. KERN

DODGE BROTHERS LOCAL DEALER

Phone 226-J

Chelsea, Mich.

Butter Fat 52c

One quart of milk in "energy food value" equals eight eggs....

That gives you some idea of the "energy value" of milk as a food....

Use more milk to give your body strength and power to carry on its activities. Use more Ann Arbor Dairy Pasteurized Milk, for it is rich, tasty and absolutely pure.

ANN ARBOR DAIRY CO.
 The Home of Pure Milk

Phone 132

Chelsea

first part, to Lynn C. Jackson county, Michigan, part, dated the eighth D. 1926, and recorded in Register of Deeds for the State of Michigan

on page 39, on which
 is to be due at the
 for principal and interest
 thousand one hundred
 and forty-six cents
 attorney fee a
 mortgage, and no sale or
 having been instituted to
 secured by said mortgage,
 in virtue of the power of
 said mortgage, and the
 made and provided, notes
 on Saturday, the 24th
 1929, at 10 o'clock in
 standard time, the under-
 signed auction to the high-
 est bidder front door of the
 city of Ann Arbor, that

pieces or parcel of land in the township of Lyndon, Washington, and state of New York, to-wit: (1/4) of the southwest corner thirty-one (31) town

24th, 1928.
ANN, L. GORTON, P.
MAYSON, M. GORTON.
Nov. 29-Feb. 21
Chelsoe, Michigan.

has been made in the payment of a mortgage secured by a mortgage of April, A. D. 1928, executed by Bernard and Ethel M. Schaefer, and wife of Ann and George, Michigan, to Louis C. A. Schaefer, husband and Waukegan County, Michigan was recorded in the Deeds of the County of Cook, Illinois, under the number 180 of Mortgages on the 1st day of April, 1928.

In the terms of said mortgage the case default be made in the payment of principal or of interest or of assessments or insurance, or of any other obligation, on any day wherein the

with all interest, taxes, insurance paid, shall, at the option of the lender, be due and payable, because and for the default having payment of the interest thereon, which default has continued in thirty days, the lender hereby exercise its option to foreclose on said mortgage and the amount claimed to be due the date of this notice is hundred dollars principal and interest to the date of thirty-five dollars as stated for in said mortgage and claimed to be unpaid on the date of this notice.

debt now remaining
due, or any part thereof,
of said contained in said
operative.
It is hereby given that
the power of sale, and in
the event of sale, the
mortgage will be fore-
closed, the premises therein de-
scribed, to the highest bidder
before of the court house
in said county of
the 15th day of March, A. D.
1911, in the forenoon of that
day, the premises are placed in
all that certain piece or
pieces of land and being in the City
of Washneten, and
County of Washneten, and
State of Washington.

of the city of Ann Arbor,
w. and State of Michigan,
g. the north line of said
place of beginning;
terly along the northerly
thence in etc. to a southerly
the easterly line of said
south line of said lot;
the southerly line of said
in a northerly direction
of beginning;
LOUIS C. SCHLEDE,
Mortgagee.
Agee, Ann Arbor, Mich.

OF MICHIGAN
for the County of Wash-
hiff.
uh-Fohey, and their and
n heirs, legatees, devisees
nts.
aid court, held at the
ity of Ann Arbor on the
A. D. 1920.
ge W. Sample, Circuit

led, presented and filed of the Court that James they and their unknown parties and persons are interested in the above herein and whose names of the Register of Deeds as having at such title interest or matter of said cause, or as having a lien or out having conveyed or and who might at any

to claim benefits there-
appearing to the satis-
faction of the said named
plaintiff, and after diligent
inquiry they have been unable to
ascertain whether such intent as
aforesaid has been thereon
personally served with
a motion of Louis B.
said plaintiff, it is Order
of the said Defendants.

months from the day of
in case of their refusal
answers to the writ, and
and a copy thereof, to be
the Plaintiff within fifteen
on them or to the attor-
Bill of Complaint, and
of said Bill be taken as
said Defendants, and it
at the said Plaintiff shall
order to be published in
within forty days from
er printed and published
asthenaw; and circulated

or that said Plaintiff
in order to be personally
and Defendants and upon
twenty days before the
their appearance:
SAMPLE, Circuit Judge,
County Clerk:
the above entitled cases
the following details:
being in the Township of
County of Washington, and
is brought in and set

pose of settling title for
as, to-wit:
Quarter of Section number
range six east, North
Lenawee County, Michigan
IS E. BURKE,
Attorney for Plaintiff
in Arbor, Michigan.

[illegible]

Albert Hinderer Car Wrecked Monday

Albert Hinderer of Sylvan, had his auto quite badly wrecked about six o'clock Monday evening when he was forced into the ditch on US-12, just east of Pierce's filling station at the intersection of US-12 and M-92.

Mr. Hinderer, accompanied by Louis Eschelbach of Chelsea, were returning home from Ann Arbor, where they had attended the annual meeting of the German Mutual Fire Insurance Co. and a car driven by employees of the Sparks-Washington Co. of Jackson, attempting to pass them, forced the Hinderer car from the highway into the ditch. The Jackson car stopped as soon as possible and brought the occupants of the wrecked car to Chelsea.

Mr. Hinderer was considerably bruised up and after first aid had been given he was taken to his home by a member of Mr. Eschelbach's family. Mr. Eschelbach had two of the fingers of his right hand lacerated and also received other minor injuries. The car driven by the Jackson parties was not injured. The Hinderer car was taken to Mohrlock's garage for repairs.

Sylvan Man Loses Finger On Buzz Saw

Reuben Lesser, of Sylvan, had an accident last Thursday afternoon that caused him to lose the first finger of his right hand. At the time of the accident he was engaged in sawing wood at the home of Gottlieb Heller. He was brought to the office of a Chelsea physician where the injured finger was amputated.

Candy Industry Goes Back to Hippocrates

Physicians among the ancient Greeks and Romans utilized the bee's honey in preparing their medicines. In fact, the manufacture of candy traces its origin back to the days of Hippocrates, father of medicine, who lived in the fifth century B. C. In those days doctors' remedies for human ills consisted of doses of bitter herbs. In order to tickle the palate of his rich patients, Hippocrates smeared a little honey on the edge of the cup containing the potion, and later on coated his pills with similar substances, thus comforting his patients and, no doubt, also increasing his fees.

Little did Hippocrates think that he was destined to go down to fame, not only as the father of medicine but as one of the originators of the art of candy-making.

From this quaint origin the candy industry has progressed to such an extent that it is now one of the world's leading industries. Its production involves labor in all parts of the world and employs every means of transportation known to man.

Idea of Human Flight Long in Minds of Men

The desire to conquer the air and emulate the birds is no modern fancy, but has agitated the minds of men mechanically inclined for ages. Records of a meeting of the Royal Society, held in London in 1670, give the information that Mr. Robert Hooke read a paper containing a description of the way of things invented and practiced by one Moses, Desnier, a smith, the contrivance of which consisted in ordering four wings, folding and unfolding them by means of his hands before and his legs behind, by which he was, it was said, able to fly from a high place across a river to a pretty distance. One of the members of the Royal Society apparently cast some doubt upon the practicability of the invention. "Mr. Desnier," he said, "by reason of the weakness of a man's arms for such kind of motions, it would be much more probable to make a clock or such like machine with springs and wheels, that should serve to carry one or more men in it to and fro."

Chrysanthemum
The name is from the Greek chryso, meaning gold, and anthemon, meaning flower. In Christian tradition, this flower is supposed to have been born on the first Christmas, being the token to the three wise men that they had reached the spot where the star had hidden.

It is in reality, however, of Chinese origin, and was made the official flower of Japan as early as the fourteenth century. It symbolized perfection. It is now grown in more than 5,000 varieties, and it is so popular in this country that men have paid \$10,000 for a fresh form of the Japanese flower.

Defenders of Lord's Day
The Lord's Day Alliance of the United States is an organization of 19 Christian denominations. Its purpose is to defend and preserve the Lord's day as a day of rest and worship, to secure a weekly rest day for the laborer, and to promote constructive Sunday legislation and law enforcement.

Treadmill Fans
Many thousands flock to the treadmill simply because work has become with them a nervous habit and they can see nothing else that would fit their lives.—Farm and Fireside.

CHURCH CIRCLES

METHODIST EPISCOPAL
Rev. Fred I. Walker, pastor.

Sunday, January 20, 1923—
Morning worship, 10 a. m. Sermon topic: "Thirsting for God."
Sunday school, 11:15. Mrs. N. W. Laird, Supt.
Evening service, 8 o'clock.
A cordial welcome is extended.

CONGREGATIONAL CHURCH
Rev. A. E. Potts, Pastor.

Morning worship, 10 o'clock. Sermon subject: "Church and Nation."
Sunday school 11:15. Mrs. Helen Lindemann, Supt.
Evening service, 8 o'clock. Deane Potts.

Dear folks: We may, if we choose, make the worst of one another. Everyone has his weak points; everyone has his faults; we may make the worst of these; we may fix our attention constantly upon them. But we may also make the best of one another. We may forgive even as we hope to be forgiven. We may put ourselves in the place of others; and ask what we should wish to be done to us, and thought of us were we in their place.

We missed many of you last Sunday—we hope to see you there next Sunday.
Faithfully yours,
A. E. Potts, Pastor.

SALEM METHODIST EPISCOPAL
Near Francisco, Mich.
Rev. F. Ross, Pastor.

Sunday, January 20—
Sunday school at 10 a. m.
Morning worship at 11 a. m.
Communion service.
Read Psalm 122.

ST. MARY CHURCH
Henry Van Dyke, Rector.

First Mass at 8 a. m.
Second Mass at 10 a. m.
Mass on week days at 8 a. m.

St. John's Evangelical Church
Rogers' Corners, Freedom Township.
Gust Ronte, Pastor.

ST. PAUL EVANGELICAL
P. H. Grabowski, Pastor.

Sunday, January 20—
10 o'clock—Church service.
10:45—Special church meeting.
11:15—Sunday school.
Don't forget the church meeting. As a matter of grave importance to our St. Paul's church is to come up at this meeting we expect every voting member to be present.

WATERLOO FIRST U. B. CHURCH
Sabbath school at 10:00 a. m. every Sabbath.

Preaching service at 11:00 a. m. every Sabbath.
A hearty welcome to every church loving attendant.
Chas. F. Moger, Pastor.

Waterloo Second U. B. Church
Preaching service at 8:30 a. m. every Sabbath.

Sabbath school at 10:30 a. m. every Sabbath.
A hearty welcome to every church loving attendant.
Chas. F. Moger, Pastor.

Lima Center Evangelical Church
A. E. Kurth, Pastor.

9:45—Morning worship. Sermon: "The Price Love Pays."
10:45—Sunday school classes.
The time of the morning worship service has been changed from 9:30 to 9:45. This change is made only for the winter months.

I. B. S. A.

Wed., 2:30 to 5 p. m. Bible study. Topic, "Laodicean Period." Golden text: Rev. 3:14. Let it be kept in mind at all times that the message of Laodicea is addressed to those who have made a covenant with the Lord by sacrifice. The Laodicean period of the church is a time of great climax in the unfolding of the divine plan. The greatest privilege ever granted to creatures comes in that period of time. All interested in Bible study welcome. 208 South St.

"Woodchuck" From Indian

"Woodchuck" as applied to the groundhog is not a compound of "wood" and "chuck" as commonly supposed. It is a corruption of the Indian word "weluck," "woodshew," or "woodshock," a name applied to this animal by hunters, trappers and traders in the Hudson Bay region. Supposedly the word is derived from the Cree "otchek" or the Chipewyan "otchig," which was applied to the animal by the Indians, but which was transferred to the groundhog by the whites. According to the bureau of American ethnology, in the nomenclature of the Hudson Bay company, the skins of groundhogs have long been known as "woodchucks."

Doing Well

A householder had trouble with the shower in his bathroom, and plumbers were called in. After an hour or more, hearing no sounds of activity from the bathroom, the householder proceeded to the scene of operations. Opening the door, he found the plumber and his mate seated on the bath, engrossed in a copy of the evening paper.

"Well," he said suspiciously, "how are you fellows getting on?"
"Fine," said the plumber, removing his pipe. "We've got a couple of winners this afternoon."—London Tit-Bits.

LINER COLUMN

FOR RENT—Light housekeeping rooms.—Phone 280-W.—22tf

FOR SALE—Steak piano, in good shape, \$65 if taken at once. Norman Wacker, phone 144-F2. —23

FOR SALE—New pair heavy bob-sleighs; second growth block wood in 3 cord lots at \$4.25 per cord; dry slab wood at \$2.75 per cord in 3 cord lots. John Bauer, Lima. —23

FOR SALE—Used light plant in good condition, cheap. Joe Merkel, phone 141-F14. —19tf

GET YOUR BUCKWHEAT FLOUR, guaranteed to be clean and free from grit. Geo. Klink. —19tf

FOR SALE—7-room house with two lots, good barn, electric lights, sewer and bath, what will you give me for it? This house is at 112 Jackson St., Chelsea. Bridget Monaghan, Ypsilanti, Mich., R. 5. —18tf

FOR SALE—About 200 cords of second growth wood, ranging from \$3 to \$4.50 per cord. Also 40 little pigs. Wm. Bauer, phone 142-F2. —18tf

FOR SALE—Sow and eight pigs. Inquire of Albert Drew, one mile east of Lyndon Center. Phone 102-F24, Chelsea. —21tf

A STANDARD WILLARD Battery, for only \$10.00. E. J. Claire & Sons, Chelsea. —21

LOST—Between our mill and Fred Notten's farm, one heavy tire chain for 7-inch tire. Finder please return to Chelsea Milling Co. and receive reward. —23

FARM FOR RENT—Inquire of Martha Riemschneider, 321 East St., or call phone 323-W. —23

FOR SALE—Shetland pony, buggy and harness; also ear corn. Phone 206-F4. Arthur Young. —23

USED CARS

1927 Ford Coupe
1928 Chevrolet Coach
1927 Essex Sedan
1927 Pontiac Coupe
1927 Hudson Sedan
1928 Buick 4-door Sedan
1928 Buick 2-door Sedan
(1 to choose from)

W. R. DANIELS

WANTED—Boy to work in garage after school and evenings. Palmer Motor Sales. —23

WANTED TO RENT—Two or three rooms for light housekeeping, heated rooms preferred. Inquire at Standard office. —23

FOR SALE—200 bushels of corn. Clarence Ulrich. —23tf

ORDER YOUR FERTILIZER NOW

Prompt, courteous service always. You get more profit for every dollar spent for A. A. Quality Fertilizer. Albert Hinderer, Chelsea, R. 2, phone 147-F22. —24

WHAT?
A Card Party
WHERE?
At St. Mary's Hall
WHEN?
January 17, 8 o'clock
By Altar Society
EVERYBODY WELCOME!

FOR SALE—Two new milch cows, good ones. Also about 200 tamarack logs for building cottages. Phone 116-F32. Clyde Reade, North Lake. —23

LOST—Dog, small, black and white spotted. Call Marks, Ann Arbor-6581 or write 341 E. Liberty St. Reward. —23

FOR SALE—Platform stake body for truck, 6 1/2 x 9 1/2 feet. Norman Wacker, phone 144-F2. —23

WANTED—To buy folding bed with mirror. Mrs. Chas. Briston, 416 So. Main St., Chelsea. —23

LOST—Between my residence on McKinley street and Main street, a tire chain. Finder please return to Roy Dillon. —23

Work Up to a Carpet

The junior clerk in the British navy begins his official life in a very bare office, with a hard chair to sit on, and a writing table that is nothing but a collapsible shelf. There is no place to keep his papers, no carpet on the floor.

His next promotion is to a table with a couple of drawers, but it is not until he has gone several rungs up the ladder and in receipt of a salary exceeding £300 a year that he can claim a real desk with lockable drawers.

Only officials in receipt of at least £1,000 a year are allowed carpets in their room.

Cathedral Dimensions

The length of the cathedral of St. John the Divine (Episcopal), New York—601 feet—is greater than that of Amiens, which is 521 feet long; Cologne, which is 511 feet; Chartres, which is 507 feet, and Milan, which is 500 feet.

Feminine Weakness

Every woman, while quarreling with her husband, has a little about the number of gentlemen who proposed to her before she met him.

Forty Years After
Two boyhood playmates met in a Brooklyn court. One was the judge, the other the prisoner, a rugged, nerve-wrecked picture of failure. "Tom, do you remember me?" the judge asked. "Yes," answered Tom, his hands shaking and his voice quivering. He was being arraigned for the eighteenth time for intoxication. He had been in the workhouse five times. He was fifty-five. "You and I were playmates," the judge recalled. "You were going to be a great lawyer and I was going to be a truck driver."

The Poppy
According to mythology, the poppy was created by Ceres in order that she might forget grief in the sleep it produced. The Romans regarded the flower as a symbol of death and dedicated it to Somnus, god of sleep. Superstition looks upon the poppies that bloom on battlefields as the blood of the slain soldiers. A strange fact about the flower is that it does not agree with other blooms, and if placed in a bouquet with them will either wilt itself or cause them to wilt, or both.

Olympic Berth?
Old lady—(Captain, will you please come down and see what's the matter with my automobile? It's jumping about terribly.—Vancouver Province.



STOP THAT COUGH

with one of our standard

Nyal or Penslar Cough Syrups

Pleasant to take, efficient in action.

Good hand lotions that keep the skin soft and smooth in all kinds of weather. Try our cold and Grippe Capsules as a preventive. A stitch in time.

BEST 35c COFFEE IN CHELSEA

GET IT AT

Drugs

BURG'S

Groceries

The Nyal and Penslar Store

To a most important group of motor car buyers

Certain American people are getting on in the world. Many of them are just starting. But they're headed up the ladder. Their ideas of luxury are expanding. They want finer homes, finer furniture, finer automobiles.

will not skimp in first cost when a few additional dollars mean greater quality and more impressive performance. They love beauty. They want more luxury. They are continually demanding greater power and speed.

During the past three years, hundreds of thousands of these progressive Americans have been buying the Pontiac Six. Some of them have bought it as the first car they ever owned. But to most of them, Pontiac has represented the first big step up from the lowest priced field.

Three years of building Pontiac Sixes for progressive Americans have taught Oakland a lot. Oakland knows, for example, that progressive people are thrifty. But it knows that their thrift is governed by real wisdom. They

For this progressive group, Oakland has now created a brand new Pontiac Six. It represents an even greater advancement over everything else in its field today than the original Pontiac represented in 1926. It offers all the style, safety and comfort advantages of entirely new bodies by Fisher. It will enable progressive Americans to enjoy greater beauty, greater luxury and finer performance than ever at its price. It will take its buyers farther than ever up the ladder of motor car quality in one step. Watch for the

NEW PONTIAC BIG 6 at \$745
J. O. B. factory

Now On Display

Harper Sales & Service
West Middle St. Phone 90 Chelsea, Mich.